

# Roll Up 28 RTS

Installation guide

EN

Notice d'installation

FR

Guida all'installazione

IT

Guía de instalación

ES

Guia de instalação

PT

Οδηγός εγκατάστασης

EL

HOME MOTION by

**somfy**<sup>®</sup>

## EN

Somfy hereby declares that this product conforms to the essential requirements and other relevant provisions of Directive 1999/5/CE. A Declaration of Conformity is available at [www.somfy.com/ce](http://www.somfy.com/ce). Usable in EU, CH and NO. Images are not contractually binding.

## FR

Par la présente, Somfy déclare que l'appareil est conforme aux exigences essentielles et aux autres dispositions pertinentes de la directive 1999/5/CE. Une déclaration de conformité est mise à disposition à l'adresse internet [www.somfy.com/ce](http://www.somfy.com/ce). Utilisable en UE, CH et NO. Images non contractuelles.

## IT

Somfy dichiara che il dispositivo è conforme ai requisiti essenziali e alle altre disposizioni pertinenti della direttiva 1999/5/CE. Una dichiarazione di conformità è disponibile all'indirizzo Internet [www.somfy.com/ce](http://www.somfy.com/ce). Utilizzabile in UE, CH e NO. Le immagini hanno uno scopo puramente indicativo.

## ES

Por la presente, Somfy declara que el producto cumple con los requisitos básicos y demás disposiciones de la directiva 1999/5/CE. Podrá encontrar una declaración de conformidad en la página web [www.somfy.com/ce](http://www.somfy.com/ce). Aplicable para la UE, Suiza y Noruega. Fotos no contractuales.

## PT

Pelo presente documento, a Somfy declara que o aparelho está conforme às exigências fundamentais e às outras disposições pertinentes da directiva 1999/5/CE. Uma Declaração de Conformidade encontra-se disponível na Internet, em [www.somfy.com/ce](http://www.somfy.com/ce). Utilizável na UE, Suíça e Noruega. Imagens não contratuais.

## EL

Με το παρόν έγγραφο, η Somfy δηλώνει ότι η συσκευή συμμορφώνεται με τις ουσιώδεις απαιτήσεις και τις λοιπές σχετικές διατάξεις της οδηγίας 1999/5/ ΕΕ. Μια δήλωση συμμόρφωσης διατίθεται στην ιστοσελίδα [www.somfy.com/ce](http://www.somfy.com/ce). Μπορεί να χρησιμοποιηθεί στην ΕΕ, την Ελβετία και τη Νορβηγία. Οι εικόνες δεν αποτελούν τμήμα της σύμβασης.

# CONTENTS

- 1. Introduction**2
- 2. Safety**2
  - 2.1. Safety and responsibility2
  - 2.2. Specific safety advice3
- 3. Installation** 3
  - 3.1. Motor preparation3
  - 3.2. Tube preparation3
  - 3.3. Motor/tube assembly3
  - 3.4. Mounting the motorized tube on the brackets3
- 4. Wiring**4
- 5. Commissioning** 4
  - 5.1. Programming the RTS transmitter4
  - 5.2. Checking the rotation direction4
  - 5.3. Adjusting the end limits4
  - 5.4. Recording the RTS transmitter5
  - 5.5. Favorite position:  
MY position / Recording MY  
position.5
- 6. Operation**5
  - 6.1. Mode selection: Roller or Tilting  
mode5
  - 6.2. Up, Down, My: In roller mode5
  - 6.3. Up, Down, My: In tilting mode6
- 7. Additional setting**6
  - 7.1. Favorite position: MY position6
  - 7.2. End limit re-adjustement7
  - 7.3. Adjusting the tilting speed7
  - 7.4. Modifying the motor rotation  
direction7
  - 7.5. Modifying the wheel rotation  
direction 8
  - 7.6. Adding/Deleting RTS transmitter 8
  - 7.7. Erasing the transmitters from the  
memory 8
  - 7.8. Erasing the memory of the motor8
- 8. Troubleshooting**9
- 9. Technical data**9

## 1. INTRODUCTION

The Roll Up 28 RTS is a motor specially dedicated to interior applications. The Roll Up 28 RTS can motorize roller blinds, silhouette blinds and roman shades. The Roll Up 28 RTS is a battery operated motor, powered with lithium primary batteries or NiMH batteries with solar pack. The motor can also be powered by a power supply.

Warning : The Roll Up 28 RTS is compatible only with the «Sunis Indoor WireFree™ RTS» sensor.

Warning : The Roll Up 28 RTS cannot be used with sealed double glazing.

## 2. SAFETY

### 2.1. Safety and responsibility

- This Somfy product must be installed by a professional motorisation and home automation installer, for whom these instructions are intended.
- Before installation, check that this product is compatible with the associated equipment and accessories.
- These instructions describe how to install, commission and use this product.
- Moreover, the installer must comply with current standards and legislation in the country in which the product is being installed, and inform his customers of the operating and maintenance conditions for the product.
- Any use outside the sphere of application specified by Somfy is not approved. Such use, or any failure to comply with the instructions given herein will invalidate the warranty, and Somfy refuses to accept liability.

Subject to technical modifications.

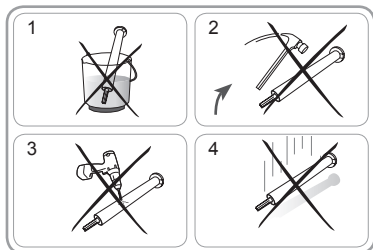
### 2.2. Specific safety advice



In addition to the safety instructions described in this guide, be sure to also observe the instructions set out in the attached document «Safety instructions to follow and keep».

To avoid damaging the product:

- 1) Never immerse it in liquid!
- 2) Avoid impacts!
- 3) Never drill holes in it!
- 4) Do not drop it!

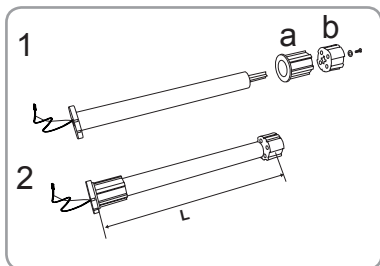


Damaged electric products and batteries should not be disposed of with normal household waste. Make sure to drop them in specially provided containers or at an authorized organization that will ensure they are recycled.

## 3. INSTALLATION

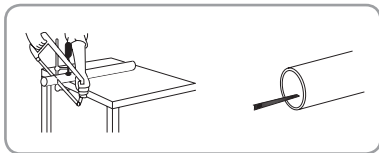
### 3.1. Motor preparation

- 1) Fit the crown (a) and drive wheel (b) to the motor.
- 2) Measure the length (L) between the end of the drive wheel and the head end.



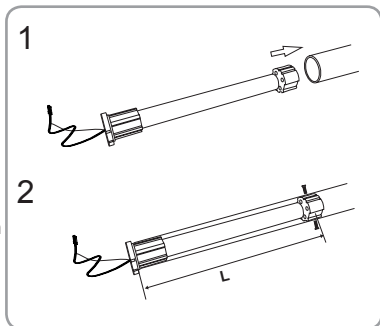
### 3.2. Tube preparation

Cut the tube to the required length.  
Deburr the tube and remove the debris.



### 3.3. Motor/tube assembly

- 1) Slide the motor into the tube. Insert the wheel by aligning the wheel to the tube profile. Insert the motor half way and then slide the crown down the motor and insert it in the tube. Finally, push the motor inside the tube.
- 2) Not required, but if needed, fix the tube to the motor with self-tapping screws or steel pop rivets depending on the dimension (L).

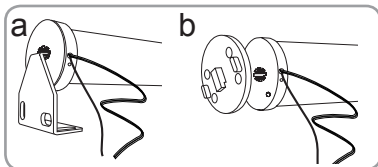


### **3.4. Mounting the motorized tube on the brackets**

- a) Standard bracket
- b) Motor plate for specific bracket



For optimal radio reception, the motor antenna should be kept straight and should be positioned outside of headrail (if used).

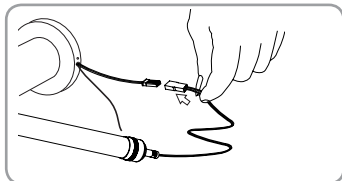


## **4. WIRING**

Plug the battery with the motor supply cable.



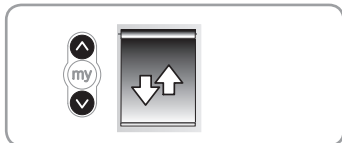
Warning: Do not unplug the battery when the motor works.



## **5. COMMISSIONING**

### **5.1. Programming the RTS transmitter**

Press the UP and DOWN buttons simultaneously on the RTS transmitter: the shade jogs and the control point is preprogrammed in the motor



## 5.2. Checking the rotation direction

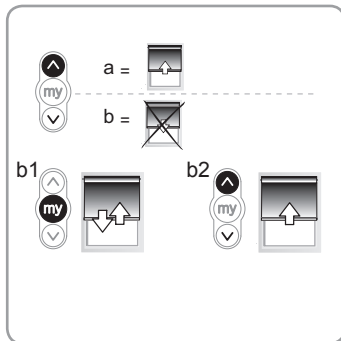
Press the RTS transmitter UP button:

a) If the shade raises (a), the rotation direction is correct: move to the section entitled 5.3 «Adjusting the end limits».

b) If the shade lowers (b), the rotation direction is incorrect: move to the next step.

b1) Press the RTS transmitter MY button until the shade jogs: the rotation direction has been modified.

b2) Press the RTS transmitter UP button to check the rotation direction.



## 5.3. Adjusting the end limits

The end limits can be set in any order.

1) Press and hold the UP button to move the shade to the desired position. If necessary adjust the Up position, using the UP or DOWN buttons.

2) Press the MY and DOWN buttons simultaneously and release them once the shade begins to move.

The up limit is memorized.

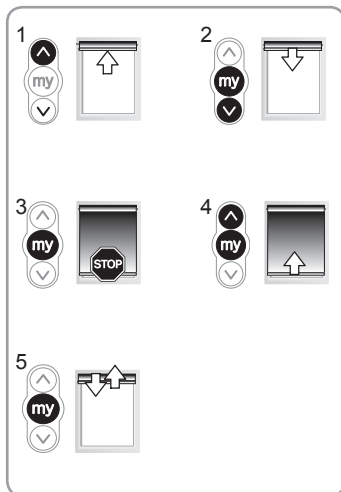
3) Press the MY button when the shade reaches the desired Down position.

If necessary adjust the down position, using the UP or DOWN buttons.

4) Press the MY and UP buttons simultaneously and release them when the shade begins to move.

The Down limit is memorized. The shade moves up and will stop at its upper limit.

5) To confirm the end limits, press and hold the MY button until the shade jogs. The end limits are recorded.



## 5.4. Recording the RTS transmitter

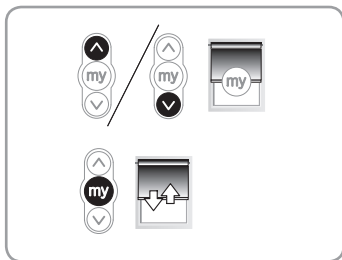
After recording the end limits:

Briefly press the programming button on the back of the transmitter. The shade jogs. The transmitter is recorded.



## 5.5. Favorite position: MY position / Recording MY position

If desired, to set the MY position, move the shade to the desired position with the UP or DOWN button then press the MY button until the shade jogs.



# 6. OPERATION

## 6.1. Mode selection: Roller or Tilting mode

The Roll Up 28 RTS is designed to work in 2 modes: Tilting mode or Roller mode.

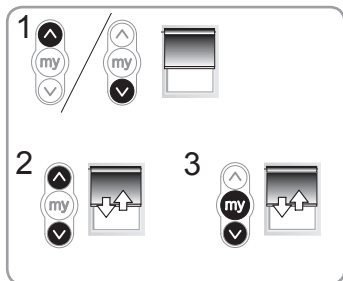
This feature allows the Roll Up 28 RTS to be set according to the type of blind you are working with.

The Roll Up 28 RTS is set by default to work in Roller mode.

1) Move the shade away from the end limits.

2) Simultaneously press the UP and DOWN buttons until the shade jogs.

3) Press and hold the MY and DOWN buttons simultaneously until the shade jogs to change from Roller mode to Tilting mode.



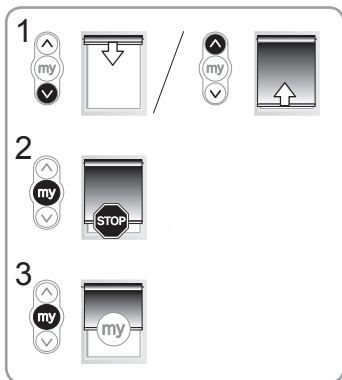


## **6.2. Up, Down, My: In roller mode**

1) To move the shade from a limit to the other limit, press briefly the UP or DOWN button.

2) To stop the shade, press the MY button.

3) If a MY position is recorded, To move the shade to this MY position, press briefly the MY button.



## **6.3. Up, Down, My: In Tilting mode**

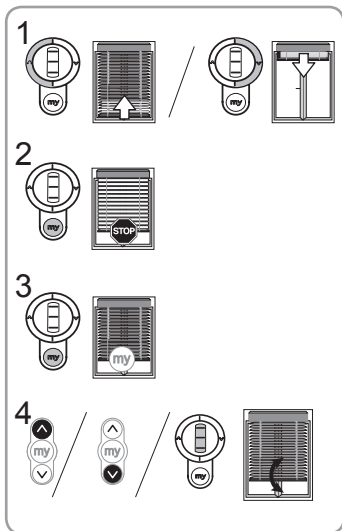
1) To move the shade from a limit to the other limit, briefly press (less than 0,5s) the UP or DOWN button.

2) To stop the shade, press the MY button.

3) If a MY position is recorded, To move the shade to this MY position, press briefly the MY button.

The shade first goes to the down end limit, then to the MY position.

4) To tilt the slats, press and hold the UP or DOWN button or use the scroll of the remote control, until the slats reach the desired position.



## 7. ADDITIONAL SETTING

### 7.1. Favorite position: MY position

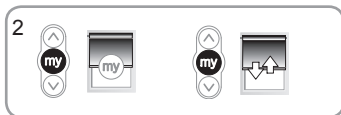
#### 1) Changing the MY position

To change the MY position, go to the new desired MY position with the UP and DOWN buttons then press the MY button until the shade jogs.



#### 2) Deleting the MY position

To delete the MY position, press the MY button to move to this position and press the MY button until the shade jogs.



### 7.2. End limit readjustment

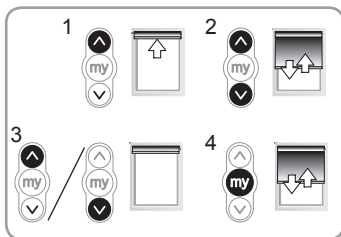
Readjusting the upper end limit

1) Press the UP button, to move the shade to the upper end limit.

2) Press and hold the UP and DOWN buttons simultaneously until the shade jogs.

3) Press and hold the UP or DOWN button to move the shade to the new desired position.

4) To confirm the new limit press and hold the MY button until the shade jogs.



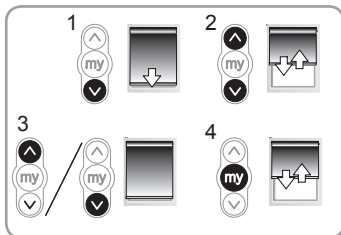
Readjusting the lower end limit

1) Press the DOWN button to move the shade to the lower end limit.

2) Press and hold the UP and DOWN buttons simultaneously until the shade jogs.

3) Press and hold the UP or DOWN button to move the shade to the new desired position.

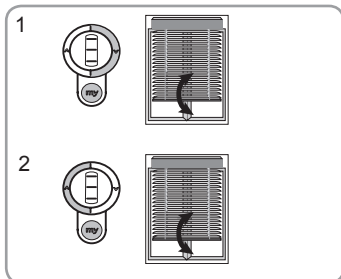
4) To confirm the new limit press and hold the MY button until the shade jogs.



### **7.3. Adjusting the tilting speed**

1) To decrease the tilting speed, press and hold the MY and DOWN buttons simultaneously until the shade jogs. Repeat as needed. If the shade does not jog, then the minimum setting has been reached.

2) To increase the tilting speed, press and hold the STOP and UP buttons simultaneously until the shade jogs. Repeat as needed. If the shade does not jog, then the maximum setting has been reached.



### **7.4. Modifying the motor rotation direction**

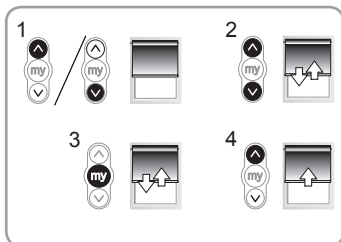
1) Move the shade away from the end limits.

2) Press the UP and DOWN buttons simultaneously until the shade jogs.

3) Press the MY button until the shade jogs to reverse the rotation direction.

4) Press the UP button to check the new rotation direction.

The motor rotation direction is reversed.

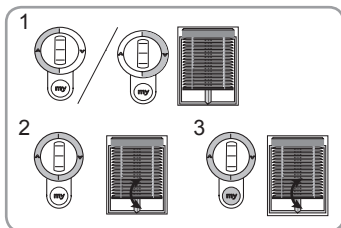


### **7.5. Modifying the wheel rotation direction**

1) Move the shade away from the end limits.

2) Press the UP and DOWN buttons simultaneously, until the shade makes an Up and Down movement.

3) Press the UP, MY and DOWN buttons simultaneously, until the shade jogs, to reverse the wheel rotation direction.

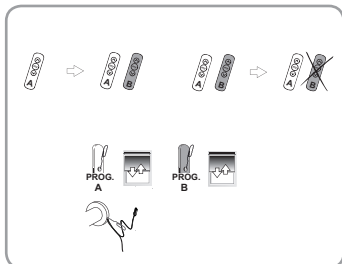


## **7.6. Adding/Deleting RTS transmitter**

Find an RTS transmitter (A) programmed in the motor.

Press and hold the RTS programmed transmitter (A) PROG button or the motor PROG button until the shade jogs: the motor is in programming mode.

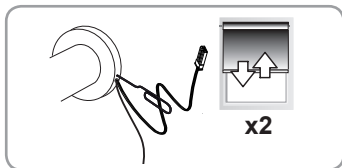
Quickly press the RTS transmitter(B) PROG button to add or delete: the shade jogs and the RTS transmitter is programmed or deleted from the motor.



## **7.7. Erasing the transmitters from the memory**

To delete all the programmed transmitters, press and hold the motor PROG button until the shade jogs twice.

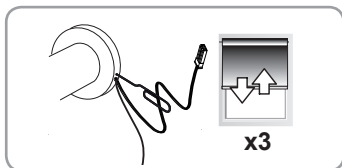
All the transmitters are deleted.



## **7.8. Erasing the memory of the motor**

To reset the motor, press and hold the PROG button on the motor head until the shade jogs 3 times.

All the settings are erased.



## 8. TIPS AND RECOMMENDATIONS

### The motor doesn't work:

#### Verify:

- The wiring of the motor.
- Batteries are not depleted.
- The compatibility of the control.
- The heat generated (wait for the cooling of the motor).
- If using battery tube, make sure the batteries are installed with the correct polarity.

### The equipment stops too soon:

#### Verify:

- The operation of end-limits during the motor rotation.
- The end-limits of the motor are properly adjusted.
- That the shade is within the recommended weight limit.

If the motor stops operating normally, the battery voltage may be too low. Replace batteries.

## 9. TECHNICAL DATA

Power supply	12 Vdc
Radio frequency	433,42 MHz
Torque	1.1 Nm
Up speed	30 rpm
Down speed	80 rpm
Electrical insulation	II
Minimum distance between two end-limit	1 turn
Maximum distance between two end-limit	180 turns
Maximum running time	6 min
Operating temperature	0°C to + 60°C
Protection rating	IP 20 (For indoor use only)
Maximum number of associated control	12

# SOMMAIRE

- 1. Introduction** 2
- 2. Sécurité** 2
  - 2.1. Sécurité et responsabilité 2
  - 2.2. Consignes spécifiques de sécurité 3
- 3. Installation** 3
  - 3.1. Préparation du moteur 3
  - 3.2. Préparation du tube 3
  - 3.3. Assemblage moteur - tube 3
  - 3.4. Monter le tube motorisé sur les supports 3
- 4. Câblage** 4
- 5. Mise en service** 4
  - 5.1. Pré-enregistrement du point de commande 4
  - 5.2. Contrôle du sens de rotation 4
  - 5.3. Réglage des fins de course 4
  - 5.4. Enregistrement du point de commande RTS 5
  - 5.5. Position favorite : position MY  
Enregistrer une position MY 5
- 6. Utilisation** 5
  - 6.1. Choix du type de mode: Mode enroulable ou vénitien 5
- 6.2. Montée, Descente et MY : En mode enroulable** 5
- 6.3. Montée, Descente et MY : En mode vénitien** 6
- 7. Réglages supplémentaires** 6
  - 7.1. Position favorite : MY position 6
  - 7.2. Modification des fins de course 7
  - 7.3. Ajustement de la vitesse d'orientation 7
  - 7.4. Modification du sens de rotation moteur 7
  - 7.5. Modification du sens de rotation de la molette 8
  - 7.6. Ajout / Suppression d'un point de commande RTS 8
  - 7.7. Effacement des points de commandes 8
  - 7.8. Effacement de la mémoire du moteur 8
- 8. Dépannage** 9
- 9. Données techniques** 9

## 1. INTRODUCTION

Le Roll Up 28 RTS est un moteur spécialement dédié aux applications intérieures. Le Roll Up 28 RTS peut motoriser des Stores rouleaux, stores Silhouettes et stores bateaux.

Le Roll Up 28 RTS est un moteur fonctionnant sur batterie, alimenté par des batteries au lithium ou des batteries NiMH avec le « Solar pack ». Le moteur peut également être alimenté par un bloc d'alimentation.

Attention: Le Roll Up 28 RTS est uniquement compatible avec le capteur «Sunis Indoor WireFree™ RTS ».

Attention: Le Roll Up 28 RTS ne peut pas être utilisé avec des double vitrage scellé.

## 2. SÉCURITÉ

### 2.1. Sécurité et responsabilité

- Ce produit Somfy doit être installé par un professionnel de la motorisation et de l'automatisation de l'habitat auquel cette notice est destinée.
- Avant toute installation, vérifier la compatibilité de ce produit avec les équipements et accessoires associés.
- Cette notice décrit l'installation, la mise en service et le mode d'utilisation de ce produit.
- L'installateur doit par ailleurs, se conformer aux normes et à la législation en vigueur dans le pays d'installation, et informer ses clients des conditions d'utilisation et de maintenance du produit.
- Toute utilisation hors du domaine d'application défini par Somfy est non conforme. Elle entraînerait, comme tout irrespect des instructions figurant dans cette notice, l'exclusion de la responsabilité et de la garantie Somfy.

Sujet à des modifications techniques.

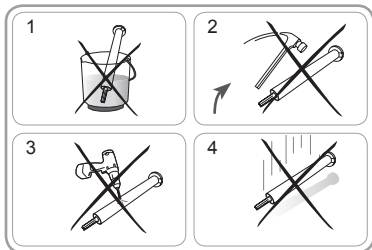
### 2.2. Consignes spécifiques de sécurité



Outre les consignes de sécurité décrites dans cette notice, respecter également les instructions détaillées dans le document joint « Consignes de sécurité à suivre et à conserver ».

Pour ne pas endommager le moteur :

- 1) Ne jamais l'immerger!
- 2) Éviter les chocs !
- 3) Ne jamais le percer!
- 4) Éviter les chutes !

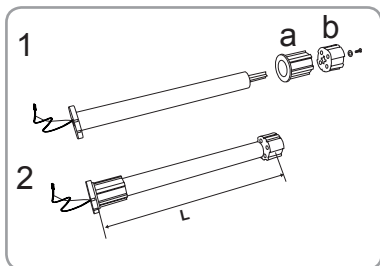


Les produits électriques et électroniques endommagés tout comme les piles usagées ne doivent pas être jetés avec les ordures ménagères. Veiller à les déposer dans un point de collecte ou dans un centre agréé afin de garantir leur recyclage.

## 3. INSTALLATION

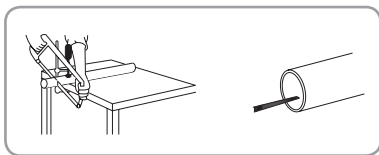
### 3.1. Préparation du moteur

- 1) Monter la couronne (a) et la roue (b) sur le moteur.
- 2) Mesurer la longueur (L) entre la tête du moteur et l'extrémité de la roue.



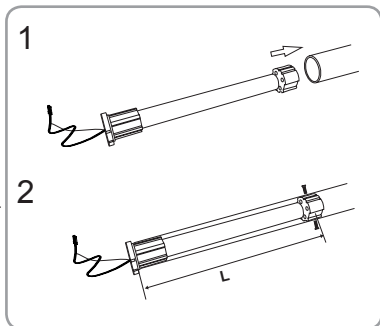
### 3.2. Préparation du tube

- Couper le tube à la longueur désirée..  
Ébavurer le tube et éliminer les copeaux.



### 3.3. Assemblage moteur / tube d'enroulement

- 1) Glisser le moteur dans le tube d'enroulement. Insérez la roue en alignant celle-ci avec le profil du tube. Insérez le moteur à moitié, et glissez la couronne depuis le bas du moteur jusqu'au tube. Pour finir, pousser le moteur dans le tube.
- 2) Si nécessaire, fixer le tube d'enroulement sur la roue avec des vis Parker ou des rivets pop acier suivant la longueur (L).



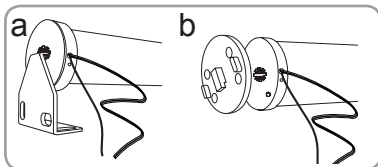


### 3.4. Monter le tube motorisé sur les supports

- a) Support standard
- b) Motor plate pour des supports spécifiques.



Pour une portée radio optimale, l'antenne du motor doit être maintenue droite, et en dehors du caisson.

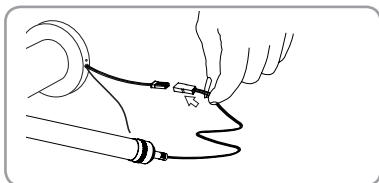


## 4. CÂBLAGE

Brancher la batterie sur le câble d'alimentation du moteur.



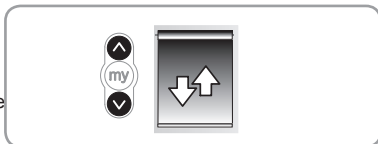
Attention: Ne pas débrancher la batterie quand le moteur fonctionne.



## 5. MISE EN SERVICE

### 5.1. Pre-enregistrement du point de commande RTS

Appuyer simultanément sur les touches Montée et Descente du point de commande RTS : Le store se déplace pendant quelques secondes et le point de commande est pré-enregistré dans le moteur.



## 5.2. Contrôle du sens de rotation

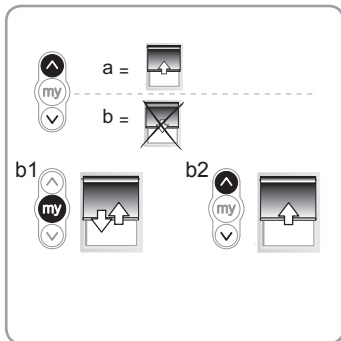
Appuyer sur la touche Montée du point de commande :

a) Si le store monte (a), le sens de rotation est correct : Passer au paragraphe 5.3 «Réglage des fins de course».

b) Si le store descend (b), le sens de rotation est incorrect : Passer à l'étape suivante.

b1) Appuyer sur la touche MY du point de commande RTS jusqu'au va-et-vient du store : Le sens de rotation est modifié.

b2) Appuyer sur la touche Montée du point de commande RTS pour contrôler le sens de rotation.



## 5.3. Réglage des fins de course

Les fins de courses peuvent être réglées dans n'importe quel ordre.

1) Placer le store en position haute souhaitée en appuyant sur la touche Montée. Si besoin, ajuster la position haute du store avec les touches Montée et Descente.

2) Appuyer simultanément sur les touches My et Descente jusqu'au mouvement du store. Le fin de course haut est mémorisé.

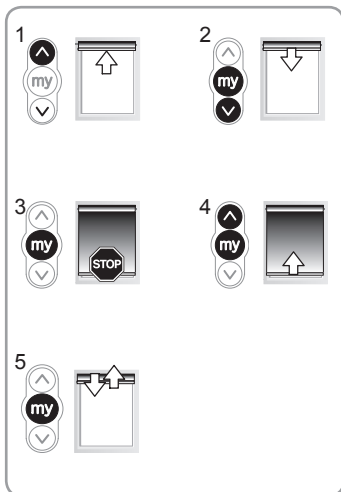
3) Appuyer sur la touche My quand le store atteint la position basse souhaitée. Si besoin, ajuster la position basse du store avec les touches Montée et Descente.

4) Appuyer simultanément sur les touches My et Montée jusqu'au mouvement du store.

Le fin de course bas est mémorisé.

Le store monte et s'arrête en position haute.

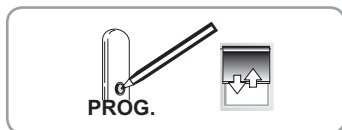
5) Pour confirmer les fins de courses, Appuyer sur la touche My jusqu'au va et vient du moteur. Les fins de courses sont enregistrées.



## 5.4. Enregistrement du point de commande RTS

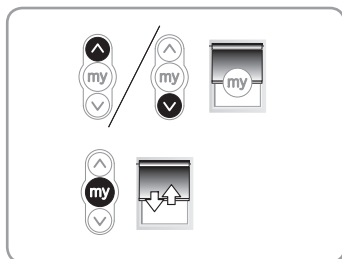
Après l'enregistrement des fins de courses: Appuyer sur le bouton PROG au dos du point de commande RTS jusqu'au va-et-vient du moteur.

Le point de commande RTS est enregistré de façon permanente.



## 5.5. Favorite position: MY position / Recording MY position

Si souhaité, pour enregistrer une position MY, mettre le store dans la position MY souhaitée en appuyant sur la touche Montée ou Descente, et ensuite appuyer sur la touche MY jusqu'au va-et-vient du store.



# 6. UTILISATION

## 6.1. Choix du type de mode: Mode enroulable ou vénitien

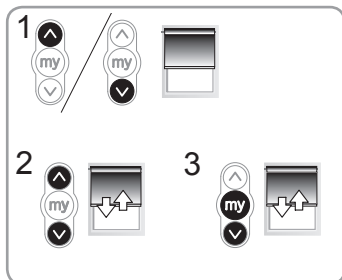
Le Roll Up 28 RTS est conçu pour fonctionner sous 2 modes: mode vénitien ou mode enroulable. Cette fonction permet de régler le Roll Up 28 RTS selon le type de store dans lequel il est installé.

Le Roll Up 28 RTS est réglé par défaut en mode enroulable.

1) Déplacer le store vers une position autre que les fins de courses.

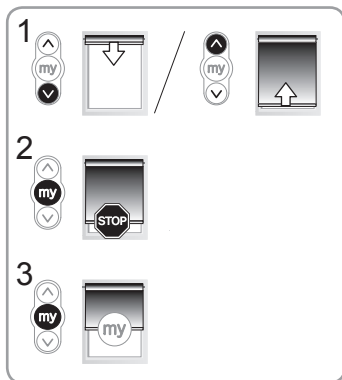
2) Appuyer simultanément sur les touches Montée et Descente jusqu'au va et- vient du store.

3) Appuyer simultanément sur les touches My et Descente jusqu'au va et- vient du store pour passer du mode enroulable au mode vénitien.



## **6.2. Montée, Descente et MY : En mode enroulable**

1) Pour déplacer le store d'un fin de course à l'autre, appuyer sur les touches Montée ou Descente.

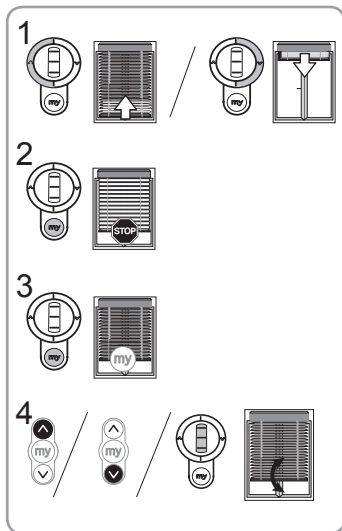


2) Pour stopper le store, appuyer sur la touche My.

3) Si une position MY est enregistrée, pour déplacer le store en position MY, appuyer sur la touche MY.

## **6.3. Montée, Descente et MY : En mode vénitien**

1) Pour déplacer le store d'un fin de course à l'autre, appuyer (moins de 0,5s) sur la touche Montée ou Descente..



2) Pour stopper le store, appuyer sur la touche MY.

3) Si une position MY est enregistrée, pour déplacer le store en position MY, appuyer sur la touche MY. Le store va en premier au fin de course bas et ensuite en position MY.

4) Pour orienter les lames, appuyer sur la touche Montée ou Descente, ou utiliser la molette du point de commande jusqu'à ce que les lames atteignent la position souhaitée.

## 7. RÉGLAGES SUPPLEMENTAIRES

### 7.1. Favorite position: MY position

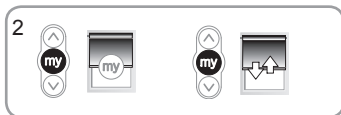
#### 1) Modifier la position MY

Pour modifier la position MY, mettre le store dans la nouvelle position MY souhaitée en appuyant sur la touche Montée ou Descente et ensuite appuyer sur la touche MY jusqu'au va-et-vient du store.



#### 2) Supprimer la position MY

Pour supprimer la position My, déplacer le store vers cette position et appuyer sur la touche My jusqu'au va et vient du store.



### 7.2. Modification des fins de course

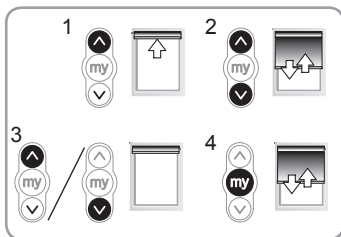
Réajustement de la fin de course haute

1) Appuyer sur le bouton Montée pour amener le store au fin de course à réajuster.

2) Appuyer en même temps sur les touches Montée et Descente jusqu'au va-et-vient du store.

3) Appuyer sur la touche Montée ou Descente pour déplacer le store vers la nouvelle position souhaitée.

4) Pour confirmer le nouveau fin de course appuyer sur la touche My jusqu'au va-et-vient du store.



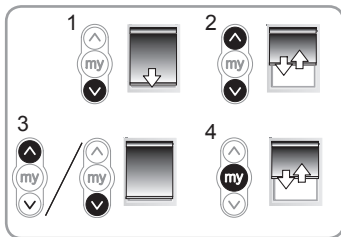
Réajustement de la fin de course basse

1) Appuyer sur le bouton Descente pour amener le store au fin de course à réajuster.

2) Appuyer en même temps sur les touches Montée et Descente jusqu'au va-et-vient du store.

3) Appuyer sur la touche Montée ou Descente pour déplacer le store vers la nouvelle position souhaitée.

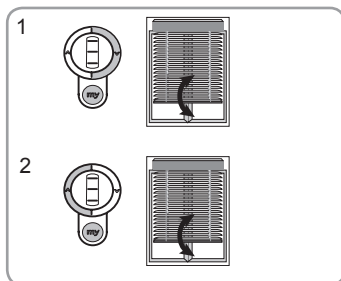
4) Pour confirmer le nouveau fin de course appuyer sur la touche My jusqu'au va-et-vient du store.



### **7.3. Ajustement de la vitesse d'orientation**

1) Pour diminuer la vitesse d'orientation, appuyer simultanément sur les touches Stop et Descente jusqu'au va et- vient du store. Répéter autant que nécessaire. Si le store de fait plus de va-et-vient, le réglage minimum a été atteint.

2) Pour augmenter la vitesse d'orientation, appuyer simultanément sur les touches Stop et Montée jusqu'au va-et- vient du store. Répéter autant que nécessaire. Si le store de fait plus de va-et-vient, le réglage maximum a été atteint.



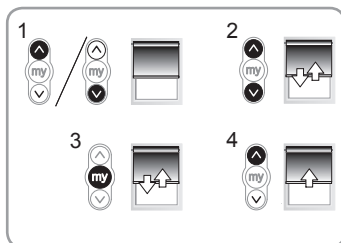
### **7.4. Modification du sens de rotation moteur**

1) Déplacer le store vers une position autre que les fins de courses.

2) Appuyer en même temps sur les touches Montée et Descente jusqu'au va-et- vient du store.

3) Appuyer sur la touches My jusqu'au va-et-vient du store pour inverser le sens de rotation.

4) Appuyer sur la touche Montée pour contrôler le sens de rotation. Le sens de rotation moteur est inversé.

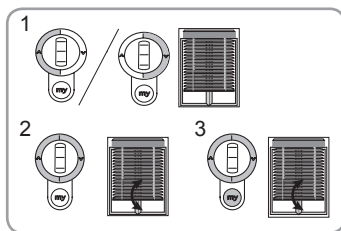


### **7.5. Modification du sens de rotation de la molette**

1) Déplacer le store vers une position autre que les fins de course.

2) Appuyer en même temps sur les touches Montée et Descente jusqu'au va-et- vient du store.

3) Appuyer sur les touches Montée, MY et Descente jusqu'au va-et- vient du store pour inverser le sens de rotation de la molette.

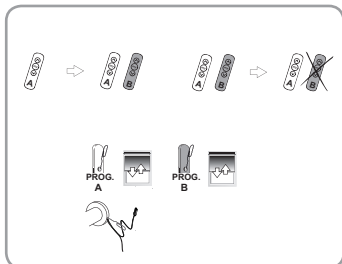


## **7.6. Ajout / Suppression d'un point de commande RTS**

Prendre un point de commande RTS (A) enregistré dans le moteur.

Appuyer sur le bouton PROG du point de commande RTS (A) ou du moteur jusqu'au va-et-vient du store: Le moteur est en mode programmation.

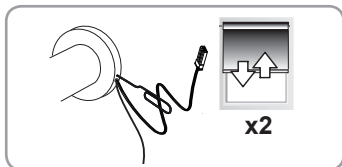
Appuyer brièvement sur le bouton PROG du point de commande RTS (B) a ajouter ou supprimer. Le store effectue un va-et-vient. Le point de commande RTS est enregistré ou supprimé du moteur.



## **7.7. Effacement des points de commandes**

Pour effacer tous les points de commande appuyer sur le bouton prog du moteur jusqu'au double va-et-vient du store.

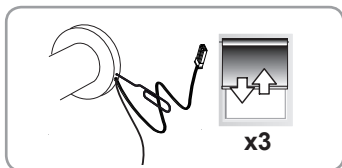
Tous les points de commandes sont effacés.



## **7.8. Effacement de la mémoire du moteur.**

Pour effacer la mémoire du moteur, appuyer sur le bouton prog du moteur jusqu'au triple va-et-vient du store.

Tous les réglages sont supprimé.



## 8. DÉPANNAGE

**Le moteur ne fonctionne pas:**

**Vérifier :**

- Le câblage du moteur.
- Que la batterie utilisée soit neuve.
- La compatibilité du point de commande.
- The heat generated (wait for the cooling of the motor).
- Dans le cas d'une utilisation d'un tube batterie, vérifier que les piles sont installé dans le bon sens.

**L'équipement s'arrête trop tôt:**

**Vérifier:**

- Le fonctionnement des fins de course pendant la rotation du moteur..
- Que les fins de course du moteur sont bien réglées.
- Que le store est dans les limites de poids recommandées.

Si le moteur ne fonctionne plus normalement, la tension de la batterie est peu être trop faible. Remplacer la batterie.

## 9. DONNÉES TECHNIQUES

Alimentation	12 Vdc
Fréquence radio	433,42 MHz
Couple	1.1 Nm
Vitesse à la montée	30 tr/min
Vitesse à la descente	80 tr/min
Niveau de sécurité	II
Distance minimum entre deux fin de courses	1 tour
Distance maximum entre deux fin de courses	180 tours
Temps de fonctionnement maximum	6 min
Température d'utilisation	0°C to + 60°C
Indice de protection	IP 20 (Pour un usage interne uniquement)
Nombre maximal de points de commandes	12



# CONTENTS

- 1. Introduction**2
- 2. Safety**2
  - 2.1. Safety and responsibility2
  - 2.2. Specific safety advice3
- 3. Installation** 3
  - 3.1. Motor preparation3
  - 3.2. Tube preparation3
  - 3.3. Motor/tube assembly3
  - 3.4. Mounting the motorized tube on the brackets3
- 4. Wiring**4
- 5. Commissioning** 4
  - 5.1. Programming the RTS transmitter4
  - 5.2. Checking the rotation direction4
  - 5.3. Adjusting the end limits4
  - 5.4. Recording the RTS transmitter5
  - 5.5. Favorite position:  
MY position / Recording MY  
position.5
- 6. Operation**5
  - 6.1. Mode selection: Roller or Tilting  
mode5
  - 6.2. Up, Down, My: In roller mode5
  - 6.3. Up, Down, My: In tilting mode6
- 7. Additional setting**6
  - 7.1. Favorite position: MY position6
  - 7.2. End limit re-adjustement7
  - 7.3. Adjusting the tilting speed7
  - 7.4. Modifying the motor rotation  
direction7
  - 7.5. Modifying the wheel rotation  
direction 8
  - 7.6. Adding/Deleting RTS transmitter 8
  - 7.7. Erasing the transmitters from the  
memory 8
  - 7.8. Erasing the memory of the motor8
- 8. Troubleshooting**9
- 9. Technical data**9

## 1. INTRODUCTION

The Roll Up 28 RTS is a motor specially dedicated to interior applications. The Roll Up 28 RTS can motorize roller blinds, silhouette blinds and roman shades. The Roll Up 28 RTS is a battery operated motor, powered with lithium primary batteries or NiMH batteries with solar pack. The motor can also be powered by a power supply. Warning : The Roll Up 28 RTS is compatible only with the «Sunis Indoor WireFree™ RTS» sensor.  
Warning : The Roll Up 28 RTS cannot be used with sealed double glazing.

## 2. SAFETY

### 2.1. Safety and responsibility

- This Somfy product must be installed by a professional motorisation and home automation installer, for whom these instructions are intended.
- Before installation, check that this product is compatible with the associated equipment and accessories.
- These instructions describe how to install, commission and use this product.
- Moreover, the installer must comply with current standards and legislation in the country in which the product is being installed, and inform his customers of the operating and maintenance conditions for the product.
- Any use outside the sphere of application specified by Somfy is not approved. Such use, or any failure to comply with the instructions given herein will invalidate the warranty, and Somfy refuses to accept liability.

Subject to technical modifications.

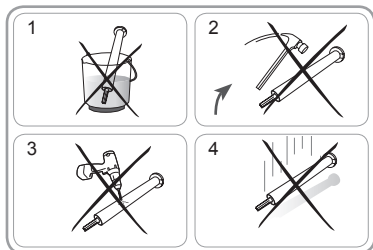
### 2.2. Specific safety advice



In addition to the safety instructions described in this guide, be sure to also observe the instructions set out in the attached document «Safety instructions to follow and keep».

To avoid damaging the product:

- 1) Never immerse it in liquid!
- 2) Avoid impacts!
- 3) Never drill holes in it!
- 4) Do not drop it!

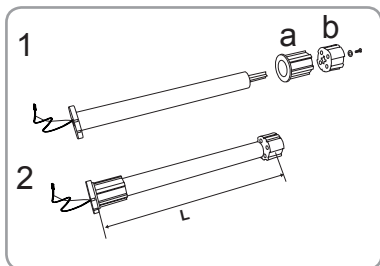


Damaged electric products and batteries should not be disposed of with normal household waste. Make sure to drop them in specially provided containers or at an authorized organization that will ensure they are recycled.

## 3. INSTALLATION

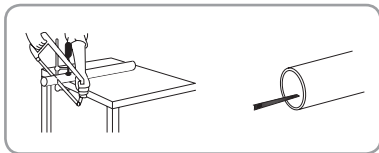
### 3.1. Motor preparation

- 1) Fit the crown (a) and drive wheel (b) to the motor.
- 2) Measure the length (L) between the end of the drive wheel and the head end.



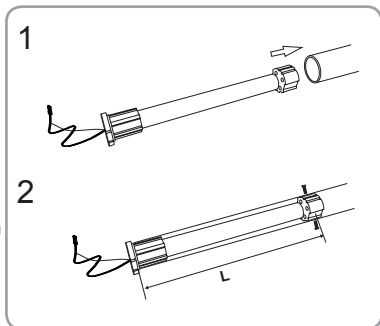
### 3.2. Tube preparation

Cut the tube to the required length.  
Deburr the tube and remove the debris.



### 3.3. Motor/tube assembly

- 1) Slide the motor into the tube. Insert the wheel by aligning the wheel to the tube profile. Insert the motor half way and then slide the crown down the motor and insert it in the tube. Finally, push the motor inside the tube.
- 2) Not required, but if needed, fix the tube to the motor with self-tapping screws or steel pop rivets depending on the dimension (L).

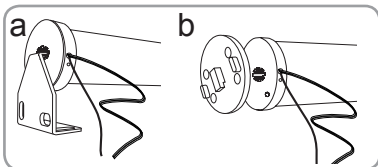


### **3.4. Mounting the motorized tube on the brackets**

- a) Standard bracket
- b) Motor plate for specific bracket



For optimal radio reception, the motor antenna should be kept straight and should be positioned outside of headrail (if used).

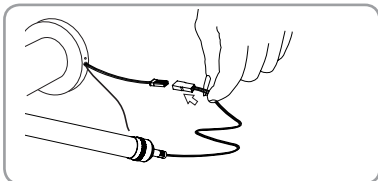


## **4. WIRING**

Plug the battery with the motor supply cable.



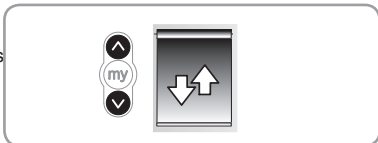
Warning: Do not unplug the battery when the motor works.



## **5. COMMISSIONING**

### **5.1. Programming the RTS transmitter**

Press the UP and DOWN buttons simultaneously on the RTS transmitter: the shade jogs and the control point is preprogrammed in the motor



## 5.2. Checking the rotation direction

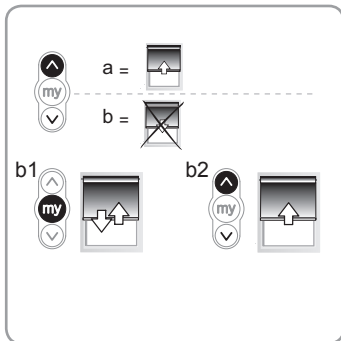
Press the RTS transmitter UP button:

a) If the shade raises (a), the rotation direction is correct: move to the section entitled 5.3 «Adjusting the end limits».

b) If the shade lowers (b), the rotation direction is incorrect: move to the next step.

b1) Press the RTS transmitter MY button until the shade jogs: the rotation direction has been modified.

b2) Press the RTS transmitter UP button to check the rotation direction.



## 5.3. Adjusting the end limits

The end limits can be set in any order.

1) Press and hold the UP button to move the shade to the desired position. If necessary adjust the Up position, using the UP or DOWN buttons.

2) Press the MY and DOWN buttons simultaneously and release them once the shade begins to move.

The up limit is memorized.

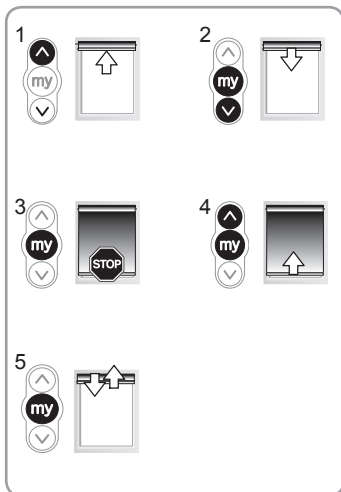
3) Press the MY button when the shade reaches the desired Down position.

If necessary adjust the down position, using the UP or DOWN buttons.

4) Press the MY and UP buttons simultaneously and release them when the shade begins to move.

The Down limit is memorized. The shade moves up and will stop at its upper limit.

5) To confirm the end limits, press and hold the MY button until the shade jogs. The end limits are recorded.



## 5.4. Recording the RTS transmitter

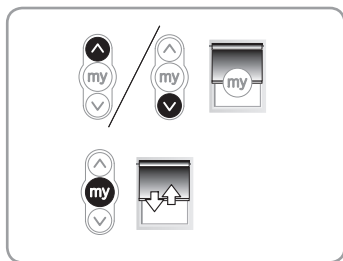
After recording the end limits:

Briefly press the programming button on the back of the transmitter. The shade jogs. The transmitter is recorded.



## 5.5. Favorite position: MY position / Recording MY position

If desired, to set the MY position, move the shade to the desired position with the UP or DOWN button then press the MY button until the shade jogs.



# 6. OPERATION

## 6.1. Mode selection: Roller or Tilting mode

The Roll Up 28 RTS is designed to work in 2 modes: Tilting mode or Roller mode.

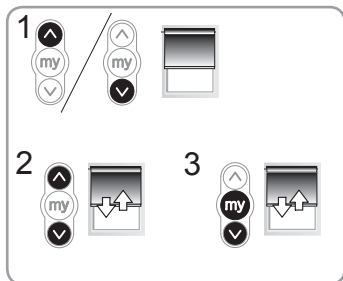
This feature allows the Roll Up 28 RTS to be set according to the type of blind you are working with.

The Roll Up 28 RTS is set by default to work in Roller mode.

1) Move the shade away from the end limits.

2) Simultaneously press the UP and DOWN buttons until the shade jogs.

3) Press and hold the MY and DOWN buttons simultaneously until the shade jogs to change from Roller mode to Tilting mode.

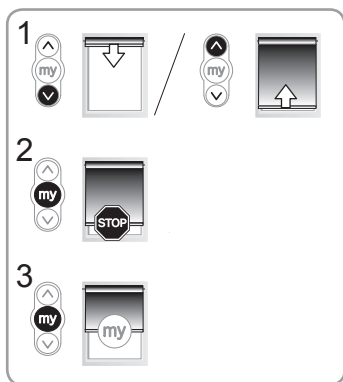


## 6.2. Up, Down, My: In roller mode

1) To move the shade from a limit to the other limit, press briefly the UP or DOWN button.

2) To stop the shade, press the MY button.

3) If a MY position is recorded, To move the shade to this MY position, press briefly the MY button.



## 6.3. Up, Down, My: In Tilting mode

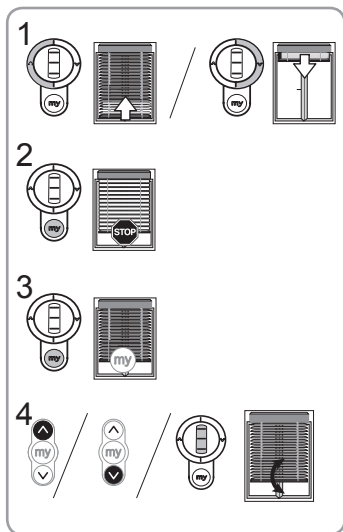
1) To move the shade from a limit to the other limit, briefly press (less than 0,5s) the UP or DOWN button.

2) To stop the shade, press the MY button.

3) If a MY position is recorded, To move the shade to this MY position, press briefly the MY button.

The shade first goes to the down end limit, then to the MY position.

4) To tilt the slats, press and hold the UP or DOWN button or use the scroll of the remote control, until the slats reach the desired position.



## 7. ADDITIONAL SETTING

### 7.1. Favorite position: MY position

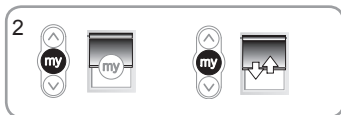
#### 1) Changing the MY position

To change the MY position, go to the new desired MY position with the UP and DOWN buttons then press the MY button until the shade jogs.



#### 2) Deleting the MY position

To delete the MY position, press the MY button to move to this position and press the MY button until the shade jogs.



### 7.2. End limit readjustment

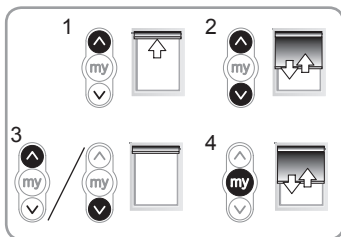
Readjusting the upper end limit

1) Press the UP button, to move the shade to the upper end limit.

2) Press and hold the UP and DOWN buttons simultaneously until the shade jogs.

3) Press and hold the UP or DOWN button to move the shade to the new desired position.

4) To confirm the new limit press and hold the MY button until the shade jogs.



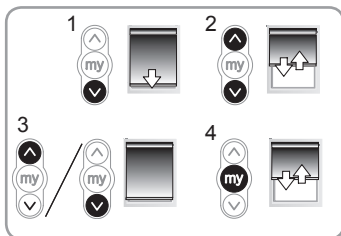
Readjusting the lower end limit

1) Press the DOWN button to move the shade to the lower end limit.

2) Press and hold the UP and DOWN buttons simultaneously until the shade jogs.

3) Press and hold the UP or DOWN button to move the shade to the new desired position.

4) To confirm the new limit press and hold the MY button until the shade jogs.

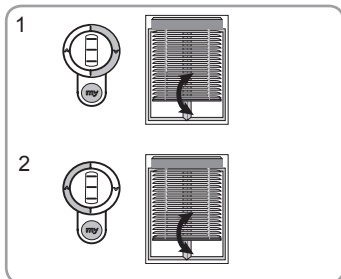




### **7.3. Adjusting the tilting speed**

1) To decrease the tilting speed, press and hold the MY and DOWN buttons simultaneously until the shade jogs. Repeat as needed. If the shade does not jog, then the minimum setting has been reached.

2) To increase the tilting speed, press and hold the STOP and UP buttons simultaneously until the shade jogs. Repeat as needed. If the shade does not jog, then the maximum setting has been reached.



### **7.4. Modifying the motor rotation direction**

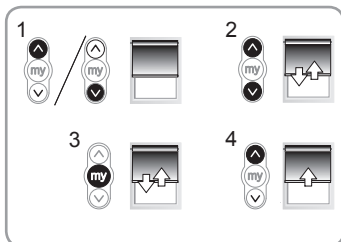
1) Move the shade away from the end limits.

2) Press the UP and DOWN buttons simultaneously until the shade jogs.

3) Press the MY button until the shade jogs to reverse the rotation direction.

4) Press the UP button to check the new rotation direction.

The motor rotation direction is reversed.

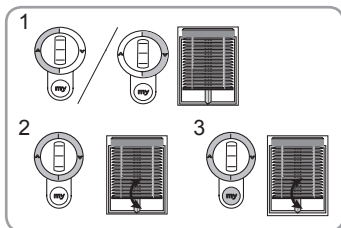


### **7.5. Modifying the wheel rotation direction**

1) Move the shade away from the end limits.

2) Press the UP and DOWN buttons simultaneously, until the shade makes an Up and Down movement.

3) Press the UP, MY and DOWN buttons simultaneously, until the shade jogs, to reverse the wheel rotation direction.

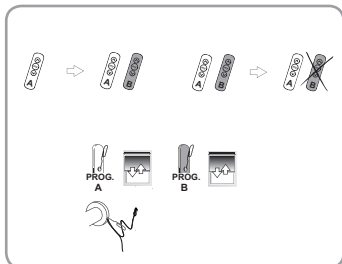


## **7.6. Adding/Deleting RTS transmitter**

Find an RTS transmitter (A) programmed in the motor.

Press and hold the RTS programmed transmitter (A) PROG button or the motor PROG button until the shade jogs: the motor is in programming mode.

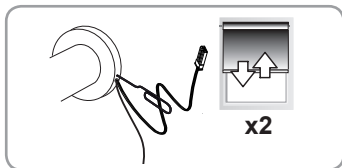
Quickly press the RTS transmitter(B) PROG button to add or delete: the shade jogs and the RTS transmitter is programmed or deleted from the motor.



## **7.7. Erasing the transmitters from the memory**

To delete all the programmed transmitters, press and hold the motor PROG button until the shade jogs twice.

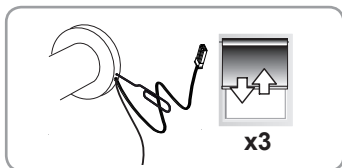
All the transmitters are deleted.



## **7.8. Erasing the memory of the motor**

To reset the motor, press and hold the PROG button on the motor head until the shade jogs 3 times.

All the settings are erased.



## 8. TIPS AND RECOMMENDATIONS

### The motor doesn't work:

#### Verify:

- The wiring of the motor.
- Batteries are not depleted.
- The compatibility of the control.
- The heat generated (wait for the cooling of the motor).
- If using battery tube, make sure the batteries are installed with the correct polarity.

### The equipment stops too soon:

#### Verify:

- The operation of end-limits during the motor rotation.
- The end-limits of the motor are properly adjusted.
- That the shade is within the recommended weight limit.

If the motor stops operating normally, the battery voltage may be too low. Replace batteries.

## 9. TECHNICAL DATA

Power supply	12 Vdc
Radio frequency	433,42 MHz
Torque	1.1 Nm
Up speed	30 rpm
Down speed	80 rpm
Electrical insulation	II
Minimum distance between two end-limit	1 turn
Maximum distance between two end-limit	180 turns
Maximum running time	6 min
Operating temperature	0°C to + 60°C
Protection rating	IP 20 (For indoor use only)
Maximum number of associated control	12

# CONTENTS

- 1. Introduction**2
- 2. Safety**2
  - 2.1. Safety and responsibility2
  - 2.2. Specific safety advice3
- 3. Installation** 3
  - 3.1. Motor preparation3
  - 3.2. Tube preparation3
  - 3.3. Motor/tube assembly3
  - 3.4. Mounting the motorized tube on the brackets3
- 4. Wiring**4
- 5. Commissioning** 4
  - 5.1. Programming the RTS transmitter4
  - 5.2. Checking the rotation direction4
  - 5.3. Adjusting the end limits4
  - 5.4. Recording the RTS transmitter5
  - 5.5. Favorite position:  
MY position / Recording MY  
position.5
- 6. Operation**5
  - 6.1. Mode selection: Roller or Tilting  
mode5
  - 6.2. Up, Down, My: In roller mode5
  - 6.3. Up, Down, My: In tilting mode6
- 7. Additional setting**6
  - 7.1. Favorite position: MY position6
  - 7.2. End limit re-adjustement7
  - 7.3. Adjusting the tilting speed7
  - 7.4. Modifying the motor rotation  
direction7
  - 7.5. Modifying the wheel rotation  
direction 8
  - 7.6. Adding/Deleting RTS transmitter 8
  - 7.7. Erasing the transmitters from the  
memory 8
  - 7.8. Erasing the memory of the motor8
- 8. Troubleshooting**9
- 9. Technical data**9

## 1. INTRODUCTION

The Roll Up 28 RTS is a motor specially dedicated to interior applications. The Roll Up 28 RTS can motorize roller blinds, silhouette blinds and roman shades. The Roll Up 28 RTS is a battery operated motor, powered with lithium primary batteries or NiMH batteries with solar pack. The motor can also be powered by a power supply. Warning : The Roll Up 28 RTS is compatible only with the «Sunis Indoor WireFree™ RTS» sensor.  
Warning : The Roll Up 28 RTS cannot be used with sealed double glazing.

## 2. SAFETY

### 2.1. Safety and responsibility

- This Somfy product must be installed by a professional motorisation and home automation installer, for whom these instructions are intended.
- Before installation, check that this product is compatible with the associated equipment and accessories.
- These instructions describe how to install, commission and use this product.
- Moreover, the installer must comply with current standards and legislation in the country in which the product is being installed, and inform his customers of the operating and maintenance conditions for the product.
- Any use outside the sphere of application specified by Somfy is not approved. Such use, or any failure to comply with the instructions given herein will invalidate the warranty, and Somfy refuses to accept liability.

Subject to technical modifications.

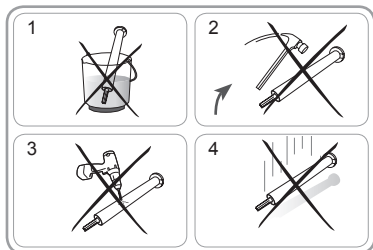
### 2.2. Specific safety advice



In addition to the safety instructions described in this guide, be sure to also observe the instructions set out in the attached document «Safety instructions to follow and keep».

To avoid damaging the product:

- 1) Never immerse it in liquid!
- 2) Avoid impacts!
- 3) Never drill holes in it!
- 4) Do not drop it!

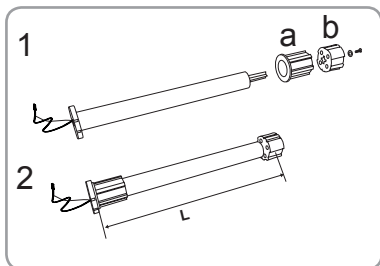


Damaged electric products and batteries should not be disposed of with normal household waste. Make sure to drop them in specially provided containers or at an authorized organization that will ensure they are recycled.

## 3. INSTALLATION

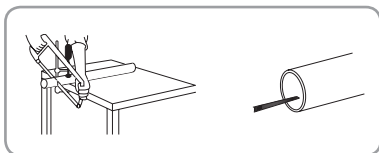
### 3.1. Motor preparation

- 1) Fit the crown (a) and drive wheel (b) to the motor.
- 2) Measure the length (L) between the end of the drive wheel and the head end.



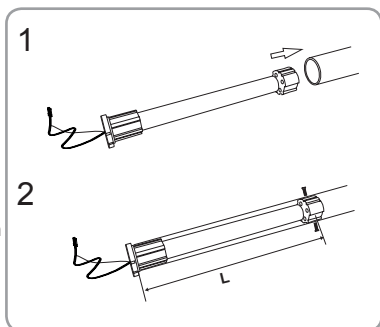
### 3.2. Tube preparation

Cut the tube to the required length.  
Deburr the tube and remove the debris.



### 3.3. Motor/tube assembly

- 1) Slide the motor into the tube. Insert the wheel by aligning the wheel to the tube profile. Insert the motor half way and then slide the crown down the motor and insert it in the tube. Finally, push the motor inside the tube.
- 2) Not required, but if needed, fix the tube to the motor with self-tapping screws or steel pop rivets depending on the dimension (L).

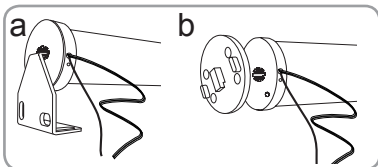


### 3.4. Mounting the motorized tube on the brackets

- a) Standard bracket
- b) Motor plate for specific bracket



For optimal radio reception, the motor antenna should be kept straight and should be positioned outside of headrail (if used).

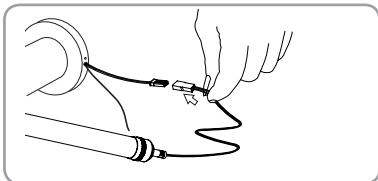


## 4. WIRING

Plug the battery with the motor supply cable.



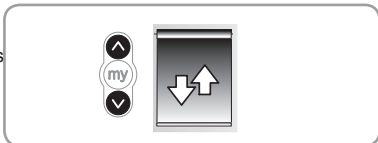
Warning: Do not unplug the battery when the motor works.



## 5. COMMISSIONING

### 5.1. Programming the RTS transmitter

Press the UP and DOWN buttons simultaneously on the RTS transmitter: the shade jogs and the control point is preprogrammed in the motor



## 5.2. Checking the rotation direction

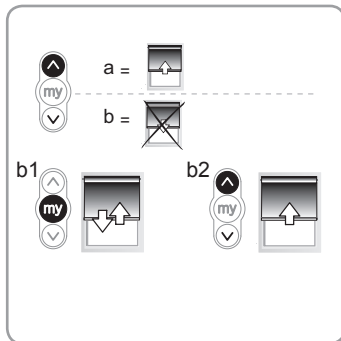
Press the RTS transmitter UP button:

a) If the shade raises (a), the rotation direction is correct: move to the section entitled 5.3 «Adjusting the end limits».

b) If the shade lowers (b), the rotation direction is incorrect: move to the next step.

b1) Press the RTS transmitter MY button until the shade jogs: the rotation direction has been modified.

b2) Press the RTS transmitter UP button to check the rotation direction.



## 5.3. Adjusting the end limits

The end limits can be set in any order.

1) Press and hold the UP button to move the shade to the desired position. If necessary adjust the Up position, using the UP or DOWN buttons.

2) Press the MY and DOWN buttons simultaneously and release them once the shade begins to move.

The up limit is memorized.

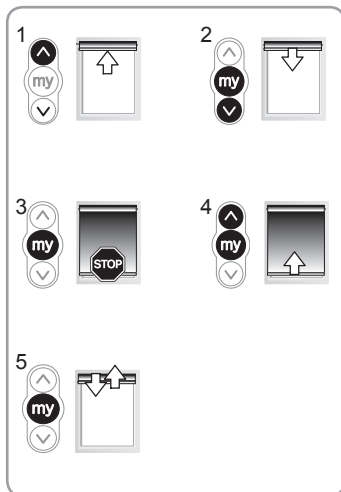
3) Press the MY button when the shade reaches the desired Down position.

If necessary adjust the down position, using the UP or DOWN buttons.

4) Press the MY and UP buttons simultaneously and release them when the shade begins to move.

The Down limit is memorized. The shade moves up and will stop at its upper limit.

5) To confirm the end limits, press and hold the MY button until the shade jogs. The end limits are recorded.





## 5.4. Recording the RTS transmitter

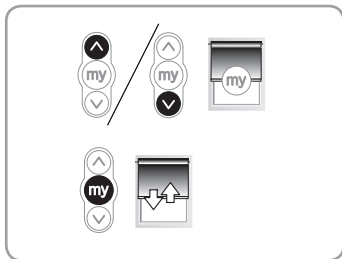
After recording the end limits:

Briefly press the programming button on the back of the transmitter. The shade jogs. The transmitter is recorded.



## 5.5. Favorite position: MY position / Recording MY position

If desired, to set the MY position, move the shade to the desired position with the UP or DOWN button then press the MY button until the shade jogs.



# 6. OPERATION

## 6.1. Mode selection: Roller or Tilting mode

The Roll Up 28 RTS is designed to work in 2 modes: Tilting mode or Roller mode.

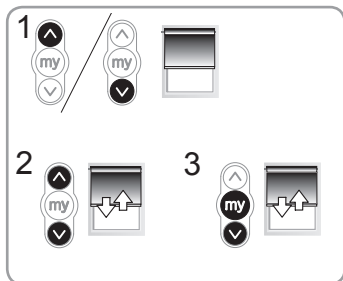
This feature allows the Roll Up 28 RTS to be set according to the type of blind you are working with.

The Roll Up 28 RTS is set by default to work in Roller mode.

1) Move the shade away from the end limits.

2) Simultaneously press the UP and DOWN buttons until the shade jogs.

3) Press and hold the MY and DOWN buttons simultaneously until the shade jogs to change from Roller mode to Tilting mode.

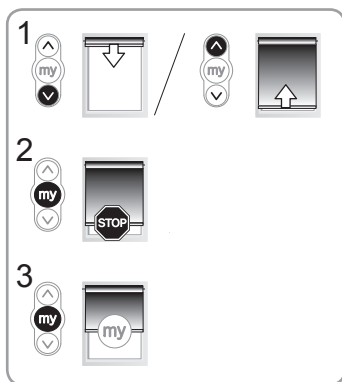


## 6.2. Up, Down, My: In roller mode

1) To move the shade from a limit to the other limit, press briefly the UP or DOWN button.

2) To stop the shade, press the MY button.

3) If a MY position is recorded, To move the shade to this MY position, press briefly the MY button.



## 6.3. Up, Down, My: In Tilting mode

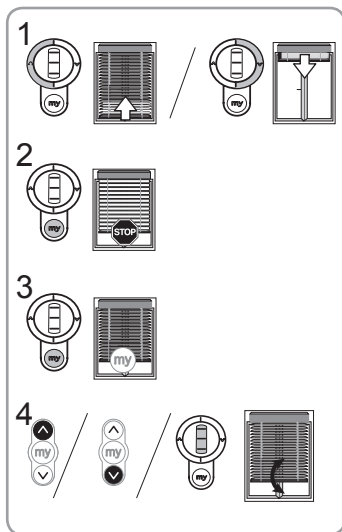
1) To move the shade from a limit to the other limit, briefly press (less than 0,5s) the UP or DOWN button.

2) To stop the shade, press the MY button.

3) If a MY position is recorded, To move the shade to this MY position, press briefly the MY button.

The shade first goes to the down end limit, then to the MY position.

4) To tilt the slats, press and hold the UP or DOWN button or use the scroll of the remote control, until the slats reach the desired position.



## 7. ADDITIONAL SETTING

### 7.1. Favorite position: MY position

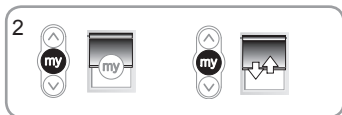
#### 1) Changing the MY position

To change the MY position, go to the new desired MY position with the UP and DOWN buttons then press the MY button until the shade jogs.



#### 2) Deleting the MY position

To delete the MY position, press the MY button to move to this position and press the MY button until the shade jogs.



### 7.2. End limit readjustment

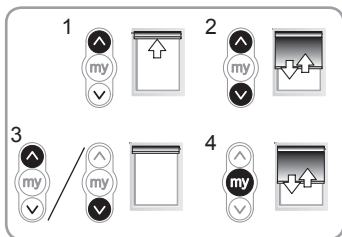
Readjusting the upper end limit

1) Press the UP button, to move the shade to the upper end limit.

2) Press and hold the UP and DOWN buttons simultaneously until the shade jogs.

3) Press and hold the UP or DOWN button to move the shade to the new desired position.

4) To confirm the new limit press and hold the MY button until the shade jogs.



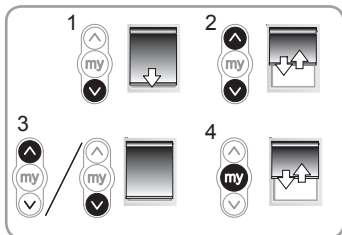
Readjusting the lower end limit

1) Press the DOWN button to move the shade to the lower end limit.

2) Press and hold the UP and DOWN buttons simultaneously until the shade jogs.

3) Press and hold the UP or DOWN button to move the shade to the new desired position.

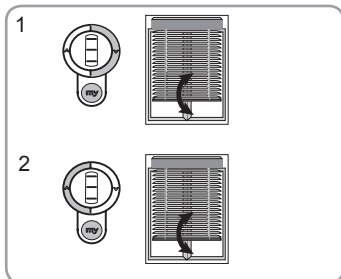
4) To confirm the new limit press and hold the MY button until the shade jogs.



### **7.3. Adjusting the tilting speed**

1) To decrease the tilting speed, press and hold the MY and DOWN buttons simultaneously until the shade jogs. Repeat as needed. If the shade does not jog, then the minimum setting has been reached.

2) To increase the tilting speed, press and hold the STOP and UP buttons simultaneously until the shade jogs. Repeat as needed. If the shade does not jog, then the maximum setting has been reached.



### **7.4. Modifying the motor rotation direction**

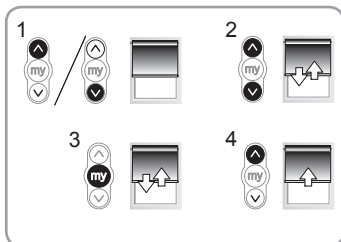
1) Move the shade away from the end limits.

2) Press the UP and DOWN buttons simultaneously until the shade jogs.

3) Press the MY button until the shade jogs to reverse the rotation direction.

4) Press the UP button to check the new rotation direction.

The motor rotation direction is reversed.

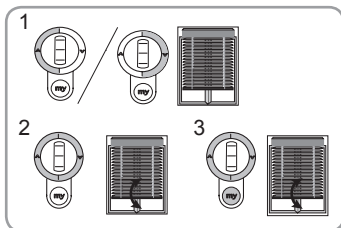


### **7.5. Modifying the wheel rotation direction**

1) Move the shade away from the end limits.

2) Press the UP and DOWN buttons simultaneously, until the shade makes an Up and Down movement.

3) Press the UP, MY and DOWN buttons simultaneously, until the shade jogs, to reverse the wheel rotation direction.

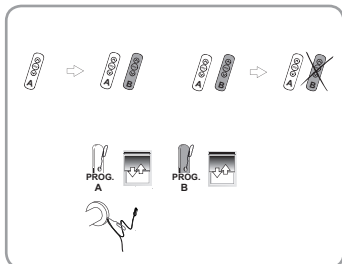


## **7.6. Adding/Deleting RTS transmitter**

Find an RTS transmitter (A) programmed in the motor.

Press and hold the RTS programmed transmitter (A) PROG button or the motor PROG button until the shade jogs: the motor is in programming mode.

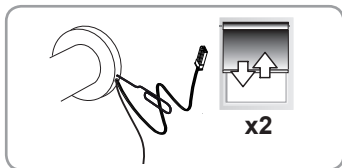
Quickly press the RTS transmitter(B) PROG button to add or delete: the shade jogs and the RTS transmitter is programmed or deleted from the motor.



## **7.7. Erasing the transmitters from the memory**

To delete all the programmed transmitters, press and hold the motor PROG button until the shade jogs twice.

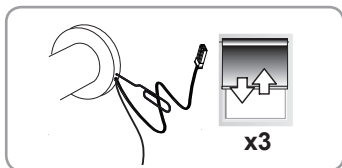
All the transmitters are deleted.



## **7.8. Erasing the memory of the motor**

To reset the motor, press and hold the PROG button on the motor head until the shade jogs 3 times.

All the settings are erased.



## 8. TIPS AND RECOMMENDATIONS

### The motor doesn't work:

#### Verify:

- The wiring of the motor.
- Batteries are not depleted.
- The compatibility of the control.
- The heat generated (wait for the cooling of the motor).
- If using battery tube, make sure the batteries are installed with the correct polarity.

### The equipment stops too soon:

#### Verify:

- The operation of end-limits during the motor rotation.
- The end-limits of the motor are properly adjusted.
- That the shade is within the recommended weight limit.

If the motor stops operating normally, the battery voltage may be too low. Replace batteries.

## 9. TECHNICAL DATA

Power supply	12 Vdc
Radio frequency	433,42 MHz
Torque	1.1 Nm
Up speed	30 rpm
Down speed	80 rpm
Electrical insulation	II
Minimum distance between two end-limit	1 turn
Maximum distance between two end-limit	180 turns
Maximum running time	6 min
Operating temperature	0°C to + 60°C
Protection rating	IP 20 (For indoor use only)
Maximum number of associated control	12

# CONTENTS

- 1. Introduction**2
- 2. Safety**2
  - 2.1. Safety and responsibility2
  - 2.2. Specific safety advice3
- 3. Installation** 3
  - 3.1. Motor preparation3
  - 3.2. Tube preparation3
  - 3.3. Motor/tube assembly3
  - 3.4. Mounting the motorized tube on the brackets3
- 4. Wiring**4
- 5. Commissioning** 4
  - 5.1. Programming the RTS transmitter4
  - 5.2. Checking the rotation direction4
  - 5.3. Adjusting the end limits4
  - 5.4. Recording the RTS transmitter5
  - 5.5. Favorite position:  
MY position / Recording MY  
position.5
- 6. Operation**5
  - 6.1. Mode selection: Roller or Tilting  
mode5
  - 6.2. Up, Down, My: In roller mode5
  - 6.3. Up, Down, My: In tilting mode6
- 7. Additional setting**6
  - 7.1. Favorite position: MY position6
  - 7.2. End limit re-adjustement7
  - 7.3. Adjusting the tilting speed7
  - 7.4. Modifying the motor rotation  
direction7
  - 7.5. Modifying the wheel rotation  
direction 8
  - 7.6. Adding/Deleting RTS transmitter 8
  - 7.7. Erasing the transmitters from the  
memory 8
  - 7.8. Erasing the memory of the motor8
- 8. Troubleshooting**9
- 9. Technical data**9

## 1. INTRODUCTION

The Roll Up 28 RTS is a motor specially dedicated to interior applications. The Roll Up 28 RTS can motorize roller blinds, silhouette blinds and roman shades. The Roll Up 28 RTS is a battery operated motor, powered with lithium primary batteries or NiMH batteries with solar pack. The motor can also be powered by a power supply. Warning : The Roll Up 28 RTS is compatible only with the «Sunis Indoor WireFree™ RTS» sensor.  
Warning : The Roll Up 28 RTS cannot be used with sealed double glazing.

## 2. SAFETY

### 2.1. Safety and responsibility

- This Somfy product must be installed by a professional motorisation and home automation installer, for whom these instructions are intended.
- Before installation, check that this product is compatible with the associated equipment and accessories.
- These instructions describe how to install, commission and use this product.
- Moreover, the installer must comply with current standards and legislation in the country in which the product is being installed, and inform his customers of the operating and maintenance conditions for the product.
- Any use outside the sphere of application specified by Somfy is not approved. Such use, or any failure to comply with the instructions given herein will invalidate the warranty, and Somfy refuses to accept liability.

Subject to technical modifications.

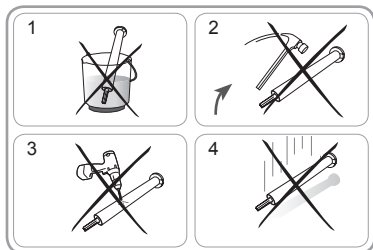
### 2.2. Specific safety advice



In addition to the safety instructions described in this guide, be sure to also observe the instructions set out in the attached document «Safety instructions to follow and keep».

To avoid damaging the product:

- 1) Never immerse it in liquid!
- 2) Avoid impacts!
- 3) Never drill holes in it!
- 4) Do not drop it!



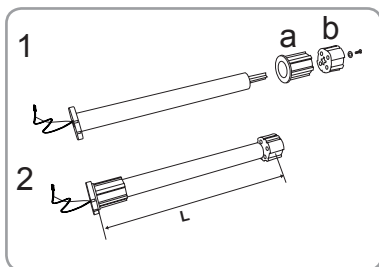
Damaged electric products and batteries should not be disposed of with normal household waste. Make sure to drop them in specially provided containers or at an authorized organization that will ensure they are recycled.



## 3. INSTALLATION

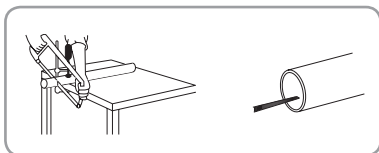
### 3.1. Motor preparation

- 1) Fit the crown (a) and drive wheel (b) to the motor.
- 2) Measure the length (L) between the end of the drive wheel and the head end.



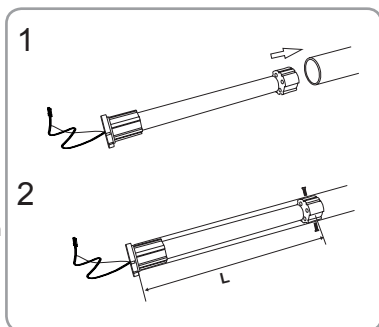
### 3.2. Tube preparation

Cut the tube to the required length.  
Deburr the tube and remove the debris.



### 3.3. Motor/tube assembly

- 1) Slide the motor into the tube. Insert the wheel by aligning the wheel to the tube profile. Insert the motor half way and then slide the crown down the motor and insert it in the tube. Finally, push the motor inside the tube.
- 2) Not required, but if needed, fix the tube to the motor with self-tapping screws or steel pop rivets depending on the dimension (L).

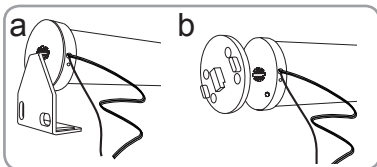


### **3.4. Mounting the motorized tube on the brackets**

- a) Standard bracket
- b) Motor plate for specific bracket



For optimal radio reception, the motor antenna should be kept straight and should be positioned outside of headrail (if used).

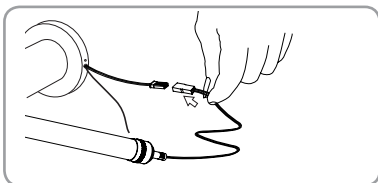


## **4. WIRING**

Plug the battery with the motor supply cable.



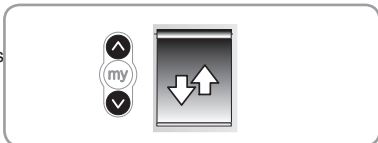
Warning: Do not unplug the battery when the motor works.



## **5. COMMISSIONING**

### **5.1. Programming the RTS transmitter**

Press the UP and DOWN buttons simultaneously on the RTS transmitter: the shade jogs and the control point is preprogrammed in the motor



## 5.2. Checking the rotation direction

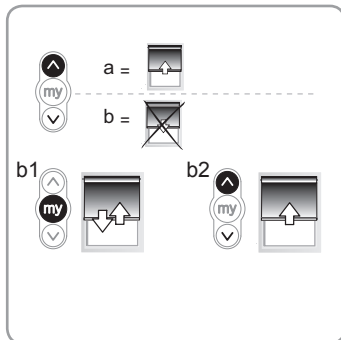
Press the RTS transmitter UP button:

a) If the shade raises (a), the rotation direction is correct: move to the section entitled 5.3 «Adjusting the end limits».

b) If the shade lowers (b), the rotation direction is incorrect: move to the next step.

b1) Press the RTS transmitter MY button until the shade jogs: the rotation direction has been modified.

b2) Press the RTS transmitter UP button to check the rotation direction.



## 5.3. Adjusting the end limits

The end limits can be set in any order.

1) Press and hold the UP button to move the shade to the desired position. If necessary adjust the Up position, using the UP or DOWN buttons.

2) Press the MY and DOWN buttons simultaneously and release them once the shade begins to move.

The up limit is memorized.

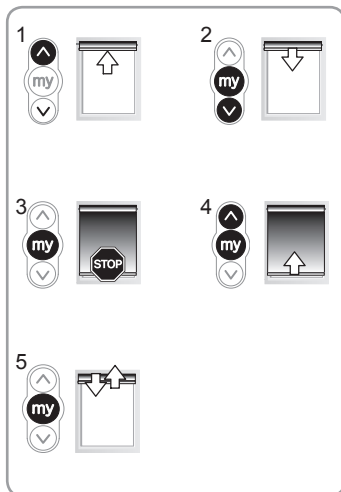
3) Press the MY button when the shade reaches the desired Down position.

If necessary adjust the down position, using the UP or DOWN buttons.

4) Press the MY and UP buttons simultaneously and release them when the shade begins to move.

The Down limit is memorized. The shade moves up and will stop at its upper limit.

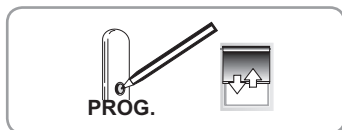
5) To confirm the end limits, press and hold the MY button until the shade jogs. The end limits are recorded.



## 5.4. Recording the RTS transmitter

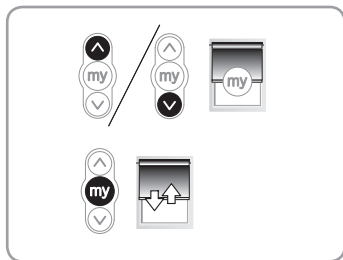
After recording the end limits:

Briefly press the programming button on the back of the transmitter. The shade jogs. The transmitter is recorded.



## 5.5. Favorite position: MY position / Recording MY position

If desired, to set the MY position, move the shade to the desired position with the UP or DOWN button then press the MY button until the shade jogs.



# 6. OPERATION

## 6.1. Mode selection: Roller or Tilting mode

The Roll Up 28 RTS is designed to work in 2 modes: Tilting mode or Roller mode.

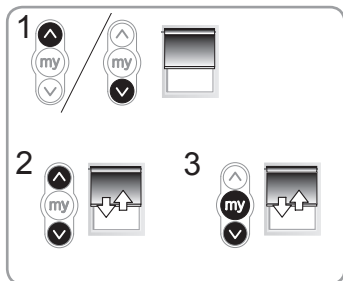
This feature allows the Roll Up 28 RTS to be set according to the type of blind you are working with.

The Roll Up 28 RTS is set by default to work in Roller mode.

1) Move the shade away from the end limits.

2) Simultaneously press the UP and DOWN buttons until the shade jogs.

3) Press and hold the MY and DOWN buttons simultaneously until the shade jogs to change from Roller mode to Tilting mode.

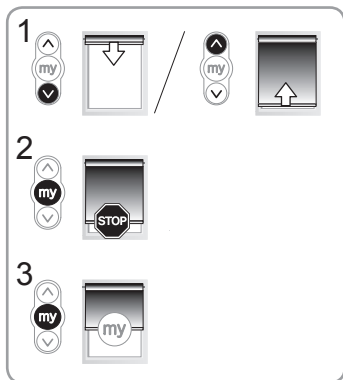


## **6.2. Up, Down, My: In roller mode**

1) To move the shade from a limit to the other limit, press briefly the UP or DOWN button.

2) To stop the shade, press the MY button.

3) If a MY position is recorded, To move the shade to this MY position, press briefly the MY button.



## **6.3. Up, Down, My: In Tilting mode**

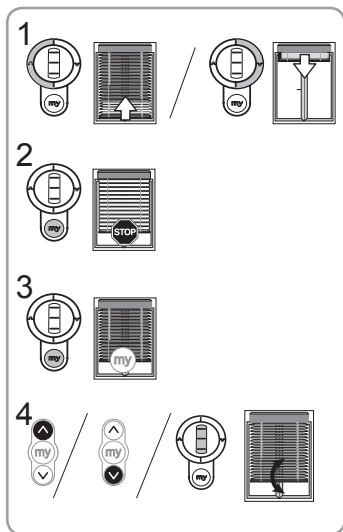
1) To move the shade from a limit to the other limit, briefly press (less than 0,5s) the UP or DOWN button.

2) To stop the shade, press the MY button.

3) If a MY position is recorded, To move the shade to this MY position, press briefly the MY button.

The shade first goes to the down end limit, then to the MY position.

4) To tilt the slats, press and hold the UP or DOWN button or use the scroll of the remote control, until the slats reach the desired position.



## 7. ADDITIONAL SETTING

### 7.1. Favorite position: MY position

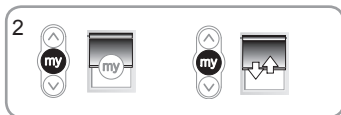
#### 1) Changing the MY position

To change the MY position, go to the new desired MY position with the UP and DOWN buttons then press the MY button until the shade jogs.



#### 2) Deleting the MY position

To delete the MY position, press the MY button to move to this position and press the MY button until the shade jogs.



### 7.2. End limit readjustment

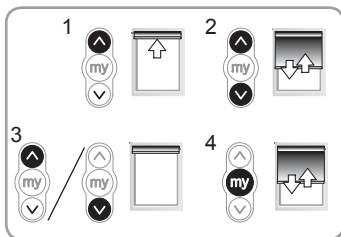
Readjusting the upper end limit

1) Press the UP button, to move the shade to the upper end limit.

2) Press and hold the UP and DOWN buttons simultaneously until the shade jogs.

3) Press and hold the UP or DOWN button to move the shade to the new desired position.

4) To confirm the new limit press and hold the MY button until the shade jogs.



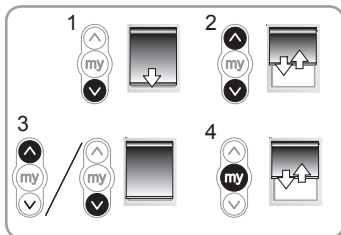
Readjusting the lower end limit

1) Press the DOWN button to move the shade to the lower end limit.

2) Press and hold the UP and DOWN buttons simultaneously until the shade jogs.

3) Press and hold the UP or DOWN button to move the shade to the new desired position.

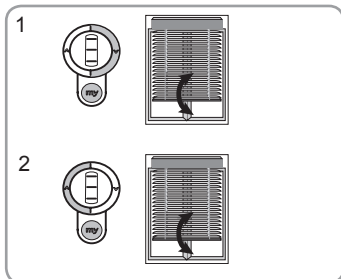
4) To confirm the new limit press and hold the MY button until the shade jogs.



### **7.3. Adjusting the tilting speed**

1) To decrease the tilting speed, press and hold the MY and DOWN buttons simultaneously until the shade jogs. Repeat as needed. If the shade does not jog, then the minimum setting has been reached.

2) To increase the tilting speed, press and hold the STOP and UP buttons simultaneously until the shade jogs. Repeat as needed. If the shade does not jog, then the maximum setting has been reached.



### **7.4. Modifying the motor rotation direction**

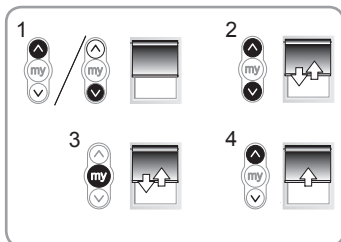
1) Move the shade away from the end limits.

2) Press the UP and DOWN buttons simultaneously until the shade jogs.

3) Press the MY button until the shade jogs to reverse the rotation direction.

4) Press the UP button to check the new rotation direction.

The motor rotation direction is reversed.

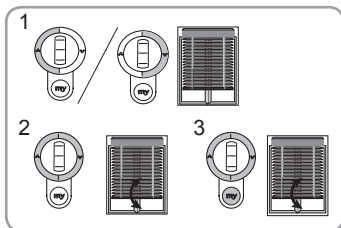


### **7.5. Modifying the wheel rotation direction**

1) Move the shade away from the end limits.

2) Press the UP and DOWN buttons simultaneously, until the shade makes an Up and Down movement.

3) Press the UP, MY and DOWN buttons simultaneously, until the shade jogs, to reverse the wheel rotation direction.

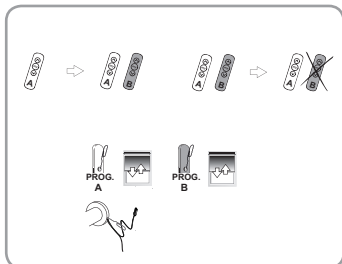


## **7.6. Adding/Deleting RTS transmitter**

Find an RTS transmitter (A) programmed in the motor.

Press and hold the RTS programmed transmitter (A) PROG button or the motor PROG button until the shade jogs: the motor is in programming mode.

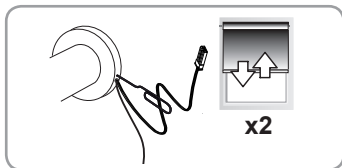
Quickly press the RTS transmitter(B) PROG button to add or delete: the shade jogs and the RTS transmitter is programmed or deleted from the motor.



## **7.7. Erasing the transmitters from the memory**

To delete all the programmed transmitters, press and hold the motor PROG button until the shade jogs twice.

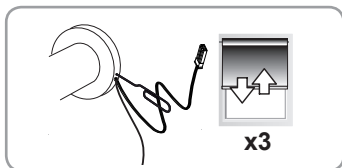
All the transmitters are deleted.



## **7.8. Erasing the memory of the motor**

To reset the motor, press and hold the PROG button on the motor head until the shade jogs 3 times.

All the settings are erased.





## 8. TIPS AND RECOMMENDATIONS

### The motor doesn't work:

#### Verify:

- The wiring of the motor.
- Batteries are not depleted.
- The compatibility of the control.
- The heat generated (wait for the cooling of the motor).
- If using battery tube, make sure the batteries are installed with the correct polarity.

### The equipment stops too soon:

#### Verify:

- The operation of end-limits during the motor rotation.
- The end-limits of the motor are properly adjusted.
- That the shade is within the recommended weight limit.

If the motor stops operating normally, the battery voltage may be too low. Replace batteries.

## 9. TECHNICAL DATA

Power supply	12 Vdc
Radio frequency	433,42 MHz
Torque	1.1 Nm
Up speed	30 rpm
Down speed	80 rpm
Electrical insulation	II
Minimum distance between two end-limit	1 turn
Maximum distance between two end-limit	180 turns
Maximum running time	6 min
Operating temperature	0°C to + 60°C
Protection rating	IP 20 (For indoor use only)
Maximum number of associated control	12

# CONTENTS

- 1. Introduction**2
- 2. Safety**2
  - 2.1. Safety and responsibility2
  - 2.2. Specific safety advice3
- 3. Installation** 3
  - 3.1. Motor preparation3
  - 3.2. Tube preparation3
  - 3.3. Motor/tube assembly3
  - 3.4. Mounting the motorized tube on the brackets3
- 4. Wiring**4
- 5. Commissioning** 4
  - 5.1. Programming the RTS transmitter4
  - 5.2. Checking the rotation direction4
  - 5.3. Adjusting the end limits4
  - 5.4. Recording the RTS transmitter5
  - 5.5. Favorite position:  
MY position / Recording MY  
position.5
- 6. Operation**5
  - 6.1. Mode selection: Roller or Tilting  
mode5
  - 6.2. Up, Down, My: In roller mode5
  - 6.3. Up, Down, My: In tilting mode6
- 7. Additional setting**6
  - 7.1. Favorite position: MY position6
  - 7.2. End limit re-adjustement7
  - 7.3. Adjusting the tilting speed7
  - 7.4. Modifying the motor rotation  
direction7
  - 7.5. Modifying the wheel rotation  
direction 8
  - 7.6. Adding/Deleting RTS transmitter 8
  - 7.7. Erasing the transmitters from the  
memory 8
  - 7.8. Erasing the memory of the motor8
- 8. Troubleshooting**9
- 9. Technical data**9

## 1. INTRODUCTION

The Roll Up 28 RTS is a motor specially dedicated to interior applications. The Roll Up 28 RTS can motorize roller blinds, silhouette blinds and roman shades. The Roll Up 28 RTS is a battery operated motor, powered with lithium primary batteries or NiMH batteries with solar pack. The motor can also be powered by a power supply. Warning : The Roll Up 28 RTS is compatible only with the «Sunis Indoor WireFree™ RTS» sensor.  
Warning : The Roll Up 28 RTS cannot be used with sealed double glazing.

## 2. SAFETY

### 2.1. Safety and responsibility

- This Somfy product must be installed by a professional motorisation and home automation installer, for whom these instructions are intended.
- Before installation, check that this product is compatible with the associated equipment and accessories.
- These instructions describe how to install, commission and use this product.
- Moreover, the installer must comply with current standards and legislation in the country in which the product is being installed, and inform his customers of the operating and maintenance conditions for the product.
- Any use outside the sphere of application specified by Somfy is not approved. Such use, or any failure to comply with the instructions given herein will invalidate the warranty, and Somfy refuses to accept liability.

Subject to technical modifications.

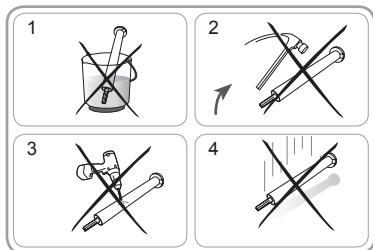
### 2.2. Specific safety advice



In addition to the safety instructions described in this guide, be sure to also observe the instructions set out in the attached document «Safety instructions to follow and keep».

To avoid damaging the product:

- 1) Never immerse it in liquid!
- 2) Avoid impacts!
- 3) Never drill holes in it!
- 4) Do not drop it!

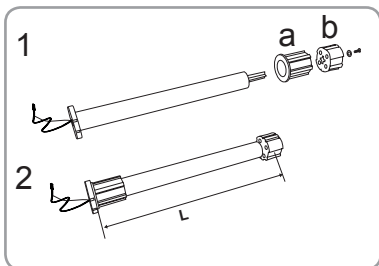


Damaged electric products and batteries should not be disposed of with normal household waste. Make sure to drop them in specially provided containers or at an authorized organization that will ensure they are recycled.

## 3. INSTALLATION

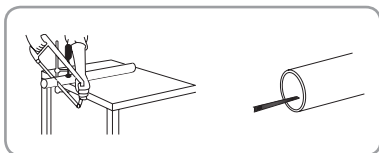
### 3.1. Motor preparation

- 1) Fit the crown (a) and drive wheel (b) to the motor.
- 2) Measure the length (L) between the end of the drive wheel and the head end.



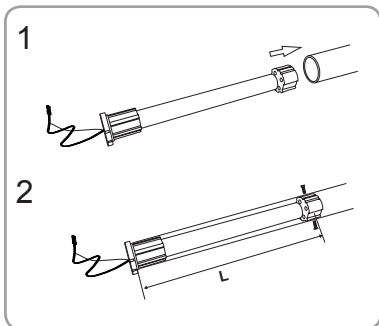
### 3.2. Tube preparation

Cut the tube to the required length.  
Deburr the tube and remove the debris.



### 3.3. Motor/tube assembly

- 1) Slide the motor into the tube. Insert the wheel by aligning the wheel to the tube profile. Insert the motor half way and then slide the crown down the motor and insert it in the tube. Finally, push the motor inside the tube.
- 2) Not required, but if needed, fix the tube to the motor with self-tapping screws or steel pop rivets depending on the dimension (L).

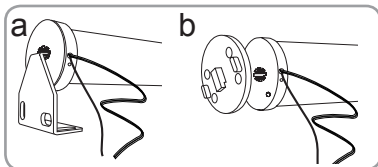


### 3.4. Mounting the motorized tube on the brackets

- a) Standard bracket
- b) Motor plate for specific bracket



For optimal radio reception, the motor antenna should be kept straight and should be positioned outside of headrail (if used).

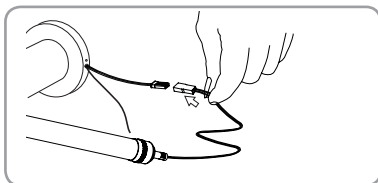


## 4. WIRING

Plug the battery with the motor supply cable.



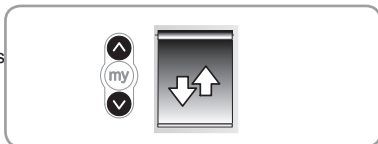
Warning: Do not unplug the battery when the motor works.



## 5. COMMISSIONING

### 5.1. Programming the RTS transmitter

Press the UP and DOWN buttons simultaneously on the RTS transmitter: the shade jogs and the control point is preprogrammed in the motor



## 5.2. Checking the rotation direction

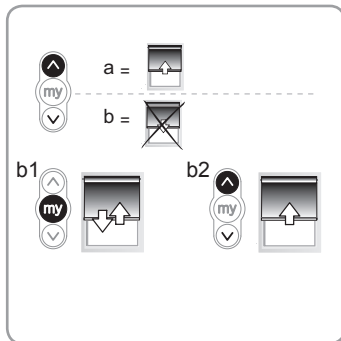
Press the RTS transmitter UP button:

a) If the shade raises (a), the rotation direction is correct: move to the section entitled 5.3 «Adjusting the end limits».

b) If the shade lowers (b), the rotation direction is incorrect: move to the next step.

b1) Press the RTS transmitter MY button until the shade jogs: the rotation direction has been modified.

b2) Press the RTS transmitter UP button to check the rotation direction.



## 5.3. Adjusting the end limits

The end limits can be set in any order.

1) Press and hold the UP button to move the shade to the desired position. If necessary adjust the Up position, using the UP or DOWN buttons.

2) Press the MY and DOWN buttons simultaneously and release them once the shade begins to move.

The up limit is memorized.

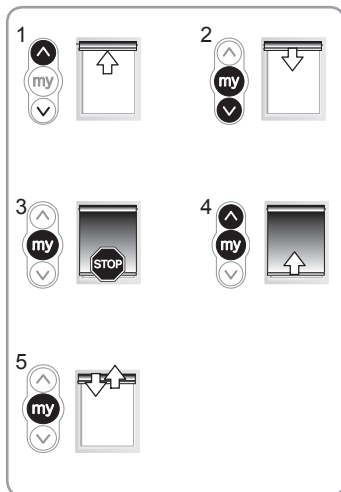
3) Press the MY button when the shade reaches the desired Down position.

If necessary adjust the down position, using the UP or DOWN buttons.

4) Press the MY and UP buttons simultaneously and release them when the shade begins to move.

The Down limit is memorized. The shade moves up and will stop at its upper limit.

5) To confirm the end limits, press and hold the MY button until the shade jogs. The end limits are recorded.



## 5.4. Recording the RTS transmitter

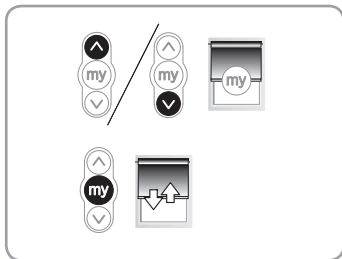
After recording the end limits:

Briefly press the programming button on the back of the transmitter. The shade jogs. The transmitter is recorded.



## 5.5. Favorite position: MY position / Recording MY position

If desired, to set the MY position, move the shade to the desired position with the UP or DOWN button then press the MY button until the shade jogs.



# 6. OPERATION

## 6.1. Mode selection: Roller or Tilting mode

The Roll Up 28 RTS is designed to work in 2 modes: Tilting mode or Roller mode.

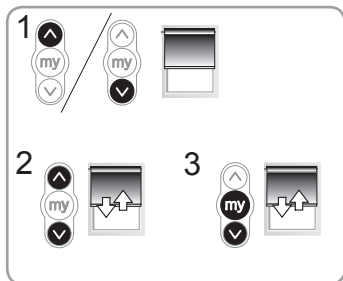
This feature allows the Roll Up 28 RTS to be set according to the type of blind you are working with.

The Roll Up 28 RTS is set by default to work in Roller mode.

1) Move the shade away from the end limits.

2) Simultaneously press the UP and DOWN buttons until the shade jogs.

3) Press and hold the MY and DOWN buttons simultaneously until the shade jogs to change from Roller mode to Tilting mode.

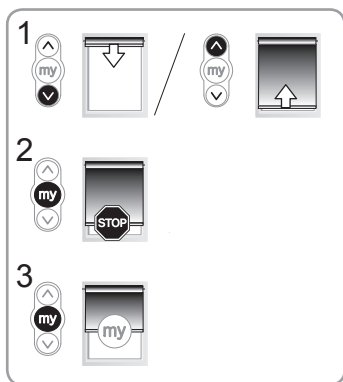


## 6.2. Up, Down, My: In roller mode

1) To move the shade from a limit to the other limit, press briefly the UP or DOWN button.

2) To stop the shade, press the MY button.

3) If a MY position is recorded, To move the shade to this MY position, press briefly the MY button.



## 6.3. Up, Down, My: In Tilting mode

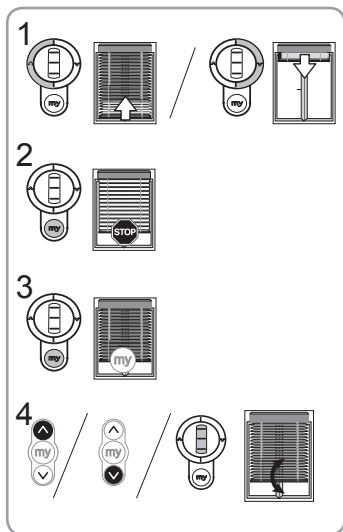
1) To move the shade from a limit to the other limit, briefly press (less than 0,5s) the UP or DOWN button.

2) To stop the shade, press the MY button.

3) If a MY position is recorded, To move the shade to this MY position, press briefly the MY button.

The shade first goes to the down end limit, then to the MY position.

4) To tilt the slats, press and hold the UP or DOWN button or use the scroll of the remote control, until the slats reach the desired position.





## 7. ADDITIONAL SETTING

### 7.1. Favorite position: MY position

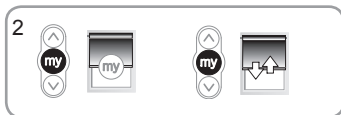
#### 1) Changing the MY position

To change the MY position, go to the new desired MY position with the UP and DOWN buttons then press the MY button until the shade jogs.



#### 2) Deleting the MY position

To delete the MY position, press the MY button to move to this position and press the MY button until the shade jogs.



### 7.2. End limit readjustment

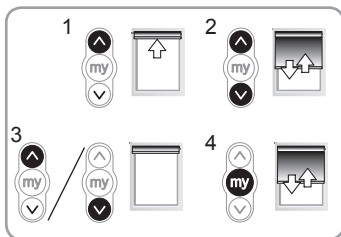
Readjusting the upper end limit

1) Press the UP button, to move the shade to the upper end limit.

2) Press and hold the UP and DOWN buttons simultaneously until the shade jogs.

3) Press and hold the UP or DOWN button to move the shade to the new desired position.

4) To confirm the new limit press and hold the MY button until the shade jogs.



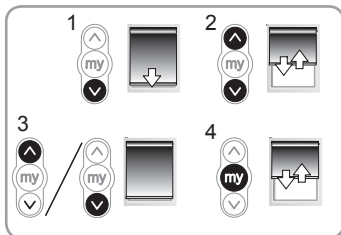
Readjusting the lower end limit

1) Press the DOWN button to move the shade to the lower end limit.

2) Press and hold the UP and DOWN buttons simultaneously until the shade jogs.

3) Press and hold the UP or DOWN button to move the shade to the new desired position.

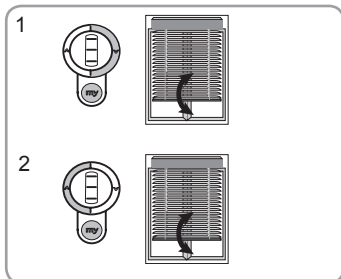
4) To confirm the new limit press and hold the MY button until the shade jogs.



### **7.3. Adjusting the tilting speed**

1) To decrease the tilting speed, press and hold the MY and DOWN buttons simultaneously until the shade jogs. Repeat as needed. If the shade does not jog, then the minimum setting has been reached.

2) To increase the tilting speed, press and hold the STOP and UP buttons simultaneously until the shade jogs. Repeat as needed. If the shade does not jog, then the maximum setting has been reached.



### **7.4. Modifying the motor rotation direction**

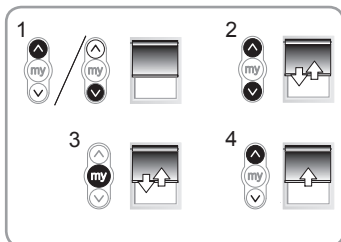
1) Move the shade away from the end limits.

2) Press the UP and DOWN buttons simultaneously until the shade jogs.

3) Press the MY button until the shade jogs to reverse the rotation direction.

4) Press the UP button to check the new rotation direction.

The motor rotation direction is reversed.

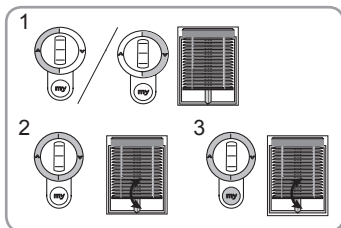


### **7.5. Modifying the wheel rotation direction**

1) Move the shade away from the end limits.

2) Press the UP and DOWN buttons simultaneously, until the shade makes an Up and Down movement.

3) Press the UP, MY and DOWN buttons simultaneously, until the shade jogs, to reverse the wheel rotation direction.

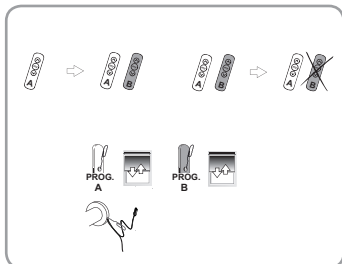


## **7.6. Adding/Deleting RTS transmitter**

Find an RTS transmitter (A) programmed in the motor.

Press and hold the RTS programmed transmitter (A) PROG button or the motor PROG button until the shade jogs: the motor is in programming mode.

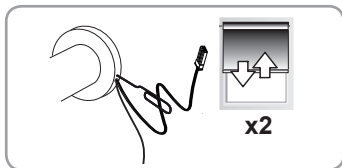
Quickly press the RTS transmitter(B) PROG button to add or delete: the shade jogs and the RTS transmitter is programmed or deleted from the motor.



## **7.7. Erasing the transmitters from the memory**

To delete all the programmed transmitters, press and hold the motor PROG button until the shade jogs twice.

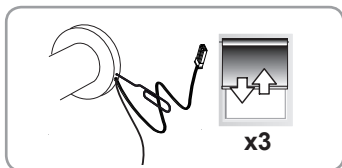
All the transmitters are deleted.



## **7.8. Erasing the memory of the motor**

To reset the motor, press and hold the PROG button on the motor head until the shade jogs 3 times.

All the settings are erased.



## 8. TIPS AND RECOMMENDATIONS

### The motor doesn't work:

#### Verify:

- The wiring of the motor.
- Batteries are not depleted.
- The compatibility of the control.
- The heat generated (wait for the cooling of the motor).
- If using battery tube, make sure the batteries are installed with the correct polarity.

### The equipment stops too soon:

#### Verify:

- The operation of end-limits during the motor rotation.
- The end-limits of the motor are properly adjusted.
- That the shade is within the recommended weight limit.

If the motor stops operating normally, the battery voltage may be too low. Replace batteries.

## 9. TECHNICAL DATA

Power supply	12 Vdc
Radio frequency	433,42 MHz
Torque	1.1 Nm
Up speed	30 rpm
Down speed	80 rpm
Electrical insulation	II
Minimum distance between two end-limit	1 turn
Maximum distance between two end-limit	180 turns
Maximum running time	6 min
Operating temperature	0°C to + 60°C
Protection rating	IP 20 (For indoor use only)
Maximum number of associated control	12







Somfy  
50 Avenue du Nouveau Monde  
BP 152 - 74307 Cluses Cedex  
France  
T +33 (0)4 50 96 70 00  
F +33 (0)4 50 96 71 89

www.somfy.com

## Somfy Worldwide

<b>Argentina:</b> Somfy Argentina Tel: +55 11 (0) 4737-3700	<b>Denmark:</b> Somfy Nordic Danmark Tel: +45 65 32 57 93	<b>Indonesia:</b> Somfy Jakarta Tel: +(62) 21 719 3620	<b>Netherlands:</b> Somfy BV Tel: +31 (0) 23 55 44 900	<b>Sweden:</b> Somfy Nordic AB Tel: +46 (0)40 16 59 00
<b>Australia:</b> Somfy PTY LTD Tel: +61 (2) 8845 7200	<b>Export:</b> Somfy Export Tel: +33 (0)4 50 96 70 76	<b>Italy:</b> Somfy Italia s.r.l Tel: +39-024847181	<b>Norway:</b> Somfy Nordic Norge Tel: +47 41 57 66 39	<b>Switzerland:</b> Somfy A.G. - Tel: +41 (0) 44 838 40 30
<b>Austria:</b> Somfy GesmbH Tel: +43 (0) 662 / 62 53 08 - 0	<b>Finland:</b> Somfy Nordic AB Finland Tel: +358 (0)9 57 130 230 Fax: +358 (0)9 57 130 231	<b>Japan:</b> SOMFY KK Tel: +81 (0)45 481 6800	<b>Poland:</b> Somfy SP Z.O.O. Tel: +48 (22) 50 95 300	<b>Syria:</b> Somfy Syria Tel: +963-9-55580700
<b>Belgium:</b> Somfy Belux Tel: +32 (0) 2 712 07 70	<b>France:</b> Somfy France Tel: +33 (0) 820 374 374	<b>Jordan:</b> Somfy Jordan Tel: +962-6-5821615	<b>Portugal:</b> Somfy Portugal Tel: +351 229 396 840	<b>Taiwan:</b> Somfy Development and Taiwan Branch Tel: +886 (0) 2 8509 8934
<b>Brasil:</b> Somfy Brasil Ltda Tel: +55 11 3695 3585	<b>Germany:</b> Somfy GmbH Tel: +49 (0) 7472 930 0	<b>Kingdom of Saudi Arabia:</b> Somfy Saudi Riyadh : Tel: +966 1 47 23 020 Tel: +966 1 47 23 203 Jeddah : Tel: +966 2 69 83 353	<b>Romania:</b> Somfy SRL Tel.: +40 - (0)368 - 444 081	<b>Thailand:</b> Bangkok Regional Office Tel: +66 (0) 2714 3170
<b>Canada:</b> Somfy ULC Tel: +1 (0) 905 564 6446	<b>Greece:</b> SOMFY HELLAS S.A. Tel: +30 210 6146768	<b>Kuwait:</b> Somfy Kuwait Tel: +965 4348906	<b>Russia:</b> Somfy LLC. Tel: +7 495 781 47 72	<b>Tunisia:</b> Somfy Tunisia Tel: +216-98303603
<b>China:</b> Somfy China Co. Ltd Tel: +8621 (0) 6280 9660	<b>Hong Kong:</b> Somfy Co. Ltd Tel: +852 (0) 2523 6339	<b>Lebanon:</b> Somfy Lebanon Tel: +961 (0) 1 391 224	<b>Singapore:</b> Somfy PTE Ltd Tel: +65 (0) 6383 3855	<b>Turkey:</b> Somfy TurkeyMah., Free Zone Tel: +90 (0) 216 651 30 15
<b>Croatia:</b> Somfy Predstavništvo Tel: +385 (0) 51 502 640	<b>Hungary:</b> Somfy Kft Tel: +36 1814 5120	<b>Malaysia:</b> Somfy Malaysia Tel: +60 (0) 3 228 74743	<b>Slovak republic:</b> Somfy, spol. s r.o. Tel: +421 337 718 638 Tel: +421 905 455 259	<b>United Arab Emirates:</b> Somfy Gulf Jebel Ali Free Zone Tel: +971 (0) 4 88 32 808
<b>Cyprus:</b> Somfy Middle East Tel: +357(0) 25 34 55 40	<b>India:</b> Somfy India PVT Ltd Tel: +(91) 11 4165 9176	<b>Mexico:</b> Somfy Mexico SA de CV Tel: 52 (55) 4777 7770	<b>South Korea:</b> Somfy JOO Tel: +82 (0) 2594 4331	<b>United Kingdom:</b> Somfy Limited Tel: +44 (0) 113 391 3030
<b>Czech Republic:</b> Somfy, spol. s.r.o. Tel: +(420) 267 913 076-8		<b>Morocco:</b> Somfy Maroc Tel: +212-22443500	<b>Spain:</b> Somfy Espana SA Tel: +34 (0) 934 800 900	<b>United States:</b> Somfy Systems Tel: +1 (0) 609 395 1300

HOME MOTION by  
**somfy**

